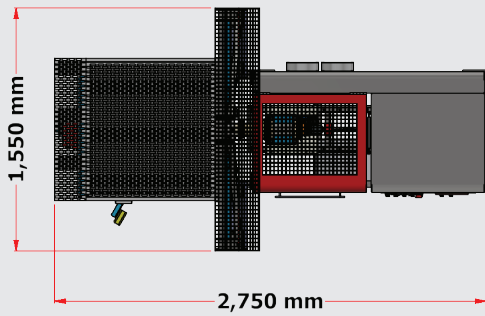
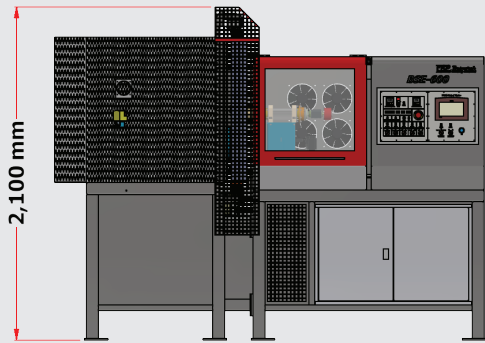


BSE-600



TOP VIEW



FRONT VIEW



Specification

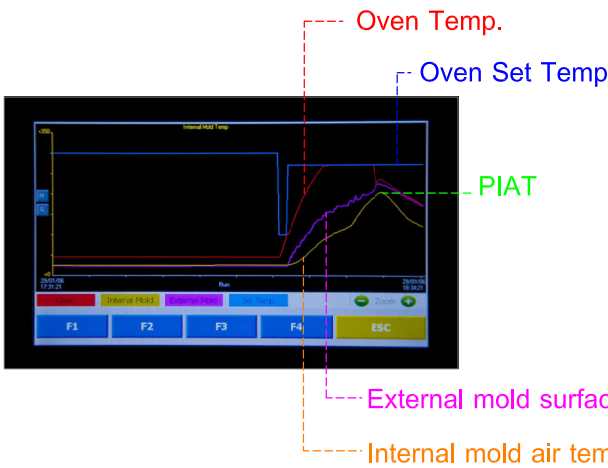
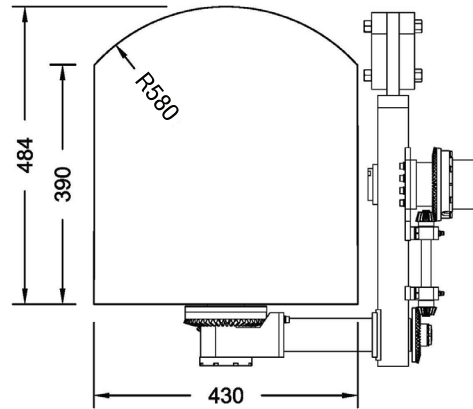
Machine type	:	Shuttle
No.of station	:	1 Heating, 1 Cooling
Dimension	:	W 1,550 x L 2,750 x H 2,100 mm
Swing Diameter	:	580 mm
Heater	:	Electrical 24 kW
Max.Oven temp.	:	300 °C
Power Supply	:	30 kW, 400VAC, 3 Phase
Air Supply	:	4-7 bar(70-100 psi), 50 LPM
Air Circulating Fan	:	Plug fan 750 watt
Weight	:	700 kg
Molding data saving	:	16GB, 200 hrs



BSE-600

Arm

- No. of arm : 1 Offset
- Max. arm load : 25 kg
- Max. arm speed : 10 rpm
- Max. plate speed : 10 rpm

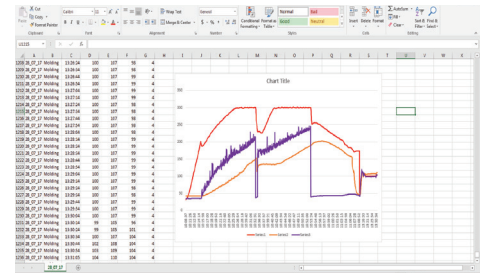
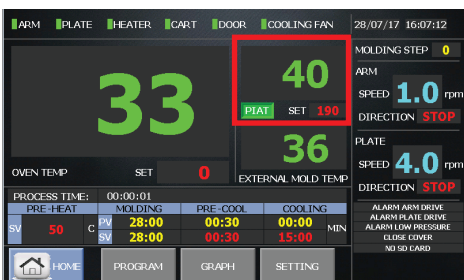


Temp. sensor build in

1. Oven Air Temperature at Oven wall
2. Internal Mold Temperature
3. Infrared External Mold Surface Temperature

Additional function

1. Resin Dryer Mode
2. Vacuum & Pressure Mode
3. Air Cool with holding Pressure



Molding Program by PIAT setting

Export data to analysis

