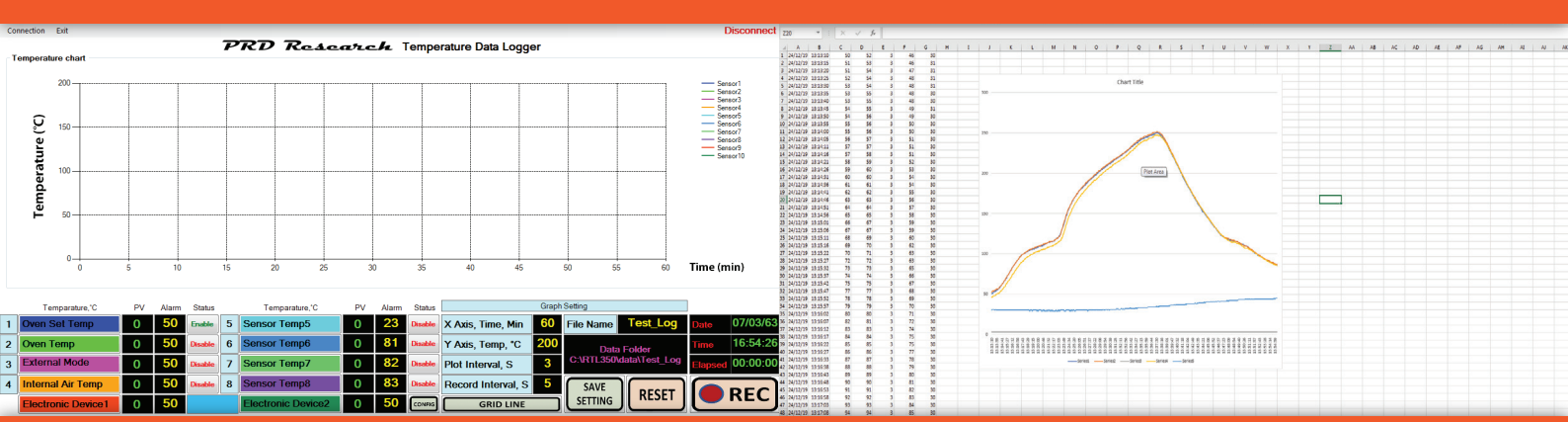
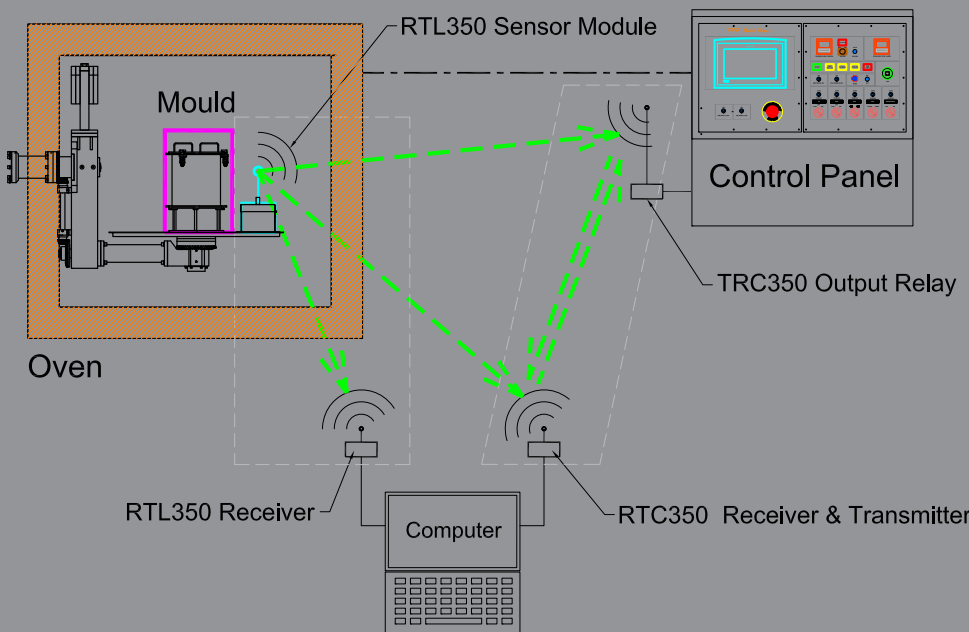


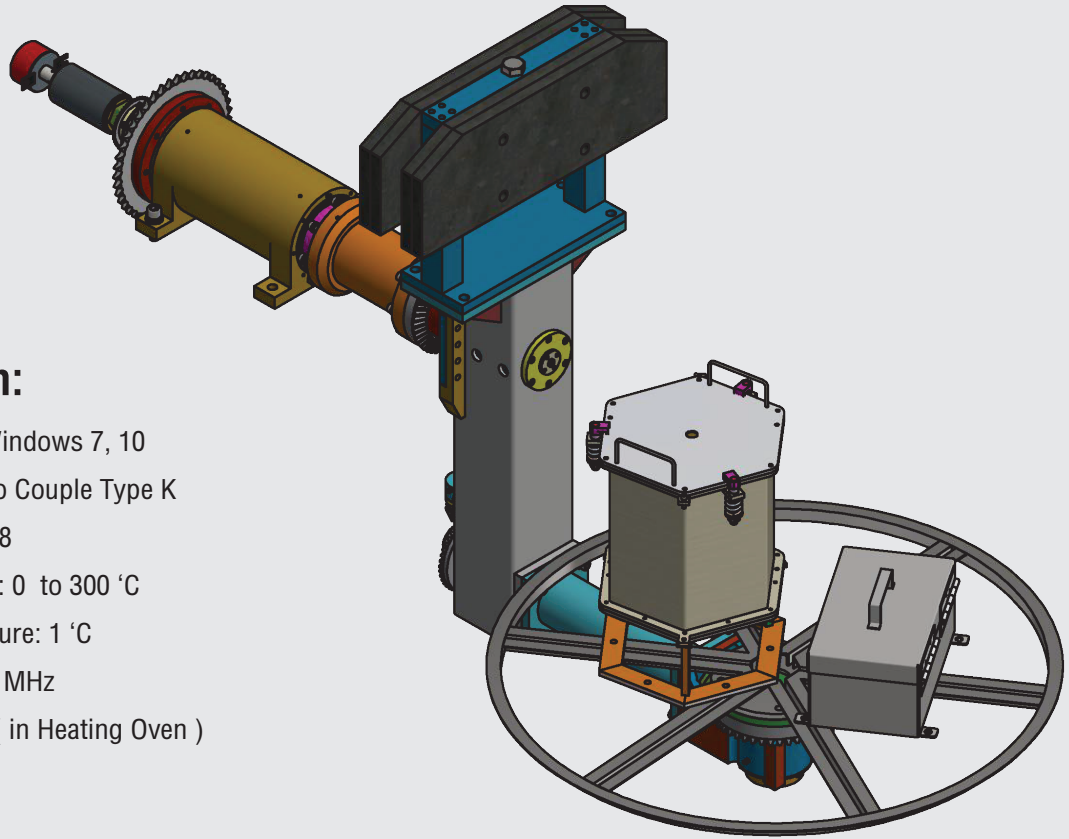
# Temperature Data Logger

## RTL350



## RTL350 System Process





## Specification:

Operating system: Windows 7, 10

Sensor Type: Thermo Couple Type K

No. of Channel: 4 or 8

Measurement Range: 0 to 300 °C

Resolution Temperature: 1 °C

Radio frequency 433 MHz

Signal Range: 15 m ( in Heating Oven )

Data Bit: 8 Bit

Boardrate: 9600

Communication Port: USB

Power supply: Battery: 2xAA (14.3 x50 mm ) Li-Ion 3.7 V, 14500, 1000 Ah,

Low battery signal monitor.

## Option:

4 or 8 points temperature controller drive output relay contact, for control Roto Machine such as control molding time due to PIAT , start and stop cooling fan.

## Environmental:

Operating Temperature: 0 -50 °C

Relative Humidity ( RH ) : 0 – 90 % ( Non-Condensing )

## Dimension & Weight including stainless steel box

WxLxH : 170 x 300 x140 mm

Weight : 4.2 kg

## Benefits of Temperature Control:

Improve the quality of products

Optimize process parameter and cycle times

Reduce manufacturing cost

Optimal Good Parts