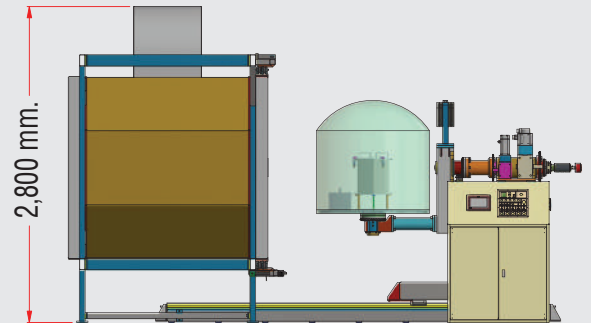
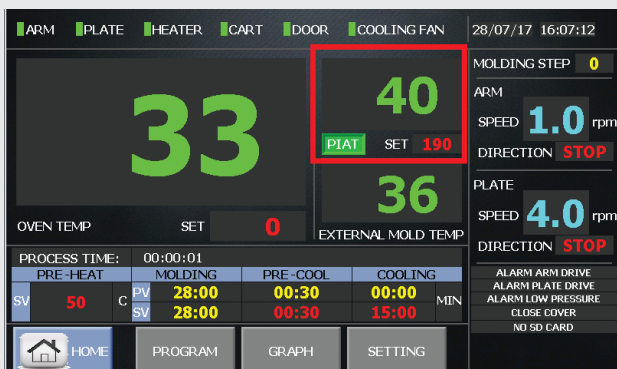


TOP VIEW



FRONT VIEW

- Heating Type : LPG (Burner 93 kW)
- Max. Oven Temp : 300 °C with PID control
- Temperature tracking and Temp. logger
- PLC with integrated 7" color touch screen HMI



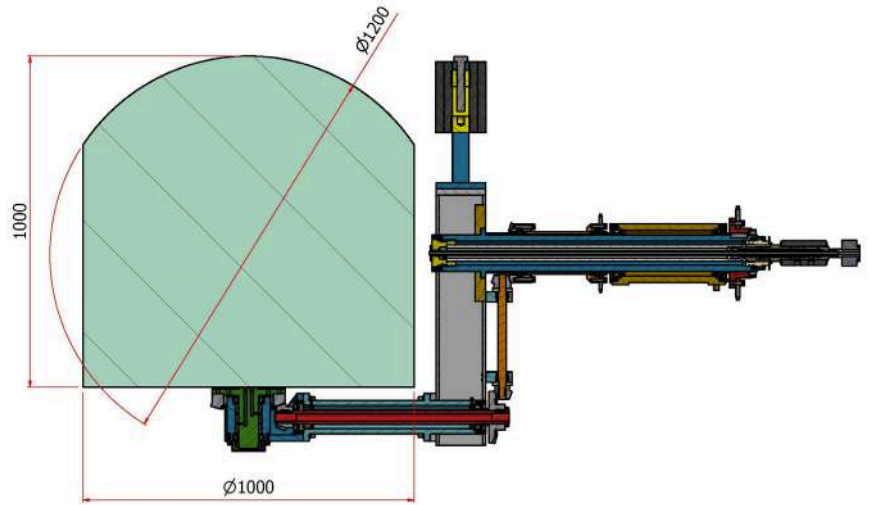
Molding Program by PIAT setting



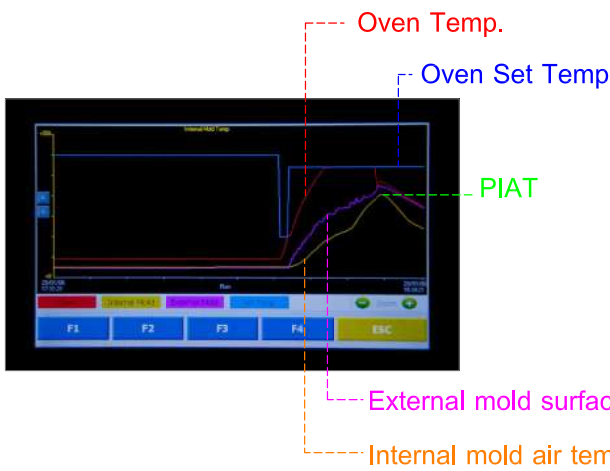
BSG-1200

Arm angle programmable

Arm & Plate rotation : 0 - 8 rpm



Swing Diameter 1200 mm.

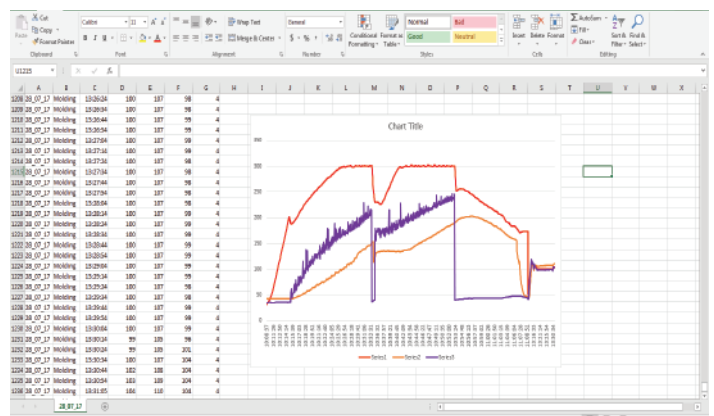


Temp. sensor build-in

1. Oven Air Temperature at Oven wall
2. Internal Mold Temperature
3. Infrared External Mold Surface Temperature

Ease of use & data acquisition

Raw data in table formats can be downloaded via LAN port to plot graph in excel



Export data to analysis

