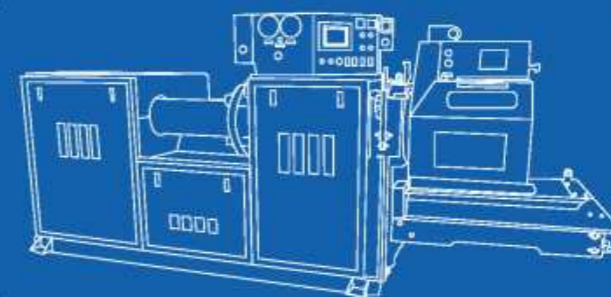




SHANGHAI DEREN  
RUBBER AND PLASTIC MACHINERY CO.,LTD.

上海德仁橡塑机械股份有限公司

SINCE 2001



### 上海德仁橡塑机械股份有限公司

SHANGHAI DEREN RUBBER & PLASTIC MACHINERY Co.,Ltd.

- 📍 上海销售总部地址:上海市宝山区富联二路177弄15号楼  
生产基地:江苏省南通市如东东安科技园海明路200号  
Shanghai Sales Department: Building 15,Lane177Fulian 2  
nd Road,Baoshan District,Shanghai.  
Factory Workshop:No.200,Haiming Road,RudongDong'an  
Scienceand Technology Park,NantongCity,Jiangsu Province
- ☎ 0086-21-36040047 (销售) 36040045 (售后)
- ☎ 0086-21-36040049
- 🌐 [www.sh-deren.com](http://www.sh-deren.com)
- ✉ [deren@sh-deren.com](mailto:deren@sh-deren.com)





## Contents 目录

企业简介 Company Profile	01
董事长介绍 Chairman Introduction	02
资质与荣誉 Qualification And Honor	03
企业文化 The Enterprise Culture	04
发展历程 Development Course	06
我们的优势 Our Advantages	08
产品介绍 Product Description	09
JYZ 系列精密预成型机 (电脑型) JYZ Series Precision Preformer(Computerized type)	10
JYZH 系列高压精密预成型机 JYZH Series High Pressure Precision Preformer	11
EBQ250 鞋坯成型机 EBQ250 Footwear Precision Preformer	13
RS 系列柱塞式滤胶机 RS Series Ram Rubber Strainer	14
系列设备选配功能 Series Equipment Selection Function	15
冷喂料螺杆预成型机 Cold Feed Screw Preformer	17
双挽热喂料螺杆预成型机 Double-Shaft Warm Feed Screwing Precision Preformer	19
冷喂料螺杆滤胶机 Cold feed screw rubber filter	21
双挽热喂料螺杆滤胶机 Double-Shaft Warm Feed Screwing Strainer Preformer	23
LSZ1050-L 振动制冷式冷却输送机 LSZ Vibration refrigeration cooling conveyor	25
LSS650 水冷式冷却输送机 LSS650 Water Cooling Conveyor	27
LSS-Q800 清理 & 自动称量水冷式冷却输送机 LSS-Q800 Clean-up & Auto-weighing Water Cooling Conveyor	29
第四代硅胶导电管生产线 The 4th Generation of Silicone Conductive Tube Production Line	31
增值服务 The Enterprise Culture	33



## COMPANY PROFILE 公司简介

上海德仁橡塑机械股份有限公司是一家专业研究、生产、开发、设计、制造橡胶精密预成型、滤胶机以及配套设备的企业。公司总部座落于中国工业与商业中心-上海，分公司位于国家级经济开发区江苏南通通州湾，公司总部占地面积12000平方米，分公司占地15000平方米，凭借自身多年的发展和奋斗，不断钻研橡胶精密预成型机和滤胶机的技术难点。一步一个脚印，稳扎稳打在橡胶精密预成型机和滤胶机行业内具有良好的口碑和影响力，产品有系列，从2001年到2023年，历时22年铸就了一个黄金品牌“德仁”。

本公司在上海科创板上市（股票代码：300367），上海市高新技术企业，现已通过ISO9001:2008质量认证、欧盟CE认证、优秀新产品奖励证书、发明专利与新型实用专利若干。德仁机械不仅在国内橡胶行业得到了广泛应用，并远销日本、东南亚、美洲以及欧洲，深受国内外客户的好评和信赖。

面对未来，作为橡胶精密预成型机和滤胶行业的资深企业，我们将继续坚持以用户为关注焦点，坚持“以德兴企，以仁待人”的核心理念，大力推进技术进步，不断提高管理水平，认真履行社会责任，竭诚为用户提供最好的服务和产品；将预成型机视作桥梁，德仁愿意与国内外各界朋友携手并进，共同发展，共创美好未来。

Shanghai Deren Rubber & Plastic Machinery Co., Ltd. is an enterprise specializing in the research, production, development, design and manufacture of rubber precision preformer, rubber filter and supporting equipment. The company's headquarters is located in China's industrial and commercial center - Shanghai, and the branch is located in Tongzhou Bay, Nantong, Jiangsu, a national economic development zone. The company's headquarters covers an area of 12,000 square meters, and the branch covers an area of 15,000 square meters, and constantly study the technical difficulties of rubber precision preformer and rubber filter. Step by step, it has a good reputation and influence in the rubber precision preformer and rubber filter industry. There are series of products. From 2001 to 2023, it took 22 years to create a golden brand "Deren".

The company is listed on Shanghai Science and Technology Innovation Board (stock code: 300367), a high-tech enterprise in Shanghai, and has passed ISO9001:2008 quality certification, EU CE certification, excellent new product award certificate, and several invention patents and new utility patents. Deren Machinery is not only widely used in domestic rubber industry, but also exported to Japan, Southeast Asia, America and Europe, which is well received and trusted by customers in domestic and international.

In the future, as a senior enterprise in rubber precision preformer and rubber filter industry, we will continue to adhere to the focus on users and the core concept of "developing enterprise with virtue and treating people with benevolence". Vigorously promote technological progress, constantly improve management level, earnestly fulfill social responsibility, and wholeheartedly provide users with the best service and products; treating preformer as a bridge, Deren is willing to work hand in hand with friends from all walks of life in domestic and foreign for common development and a better future.

## THE CHAIRMAN INTRODUCED

### 董事长介绍

上海德仁橡塑机械有限公司是一家专业研究、开发、设计、制造橡胶精密预成型机的企业。董事长、总经理吴玉彪先生，八十年代带着技术人员开发、研制我国最早的橡胶精密预成型机；1994年，作为该项目的第一位成功研发者荣获了上海市政府颁发的科技成果奖；2001年，投资组建上海德仁橡塑机械有限公司，自有厂房占地面积12000平方米。

二十多年来，吴玉彪先生严于律己、不畏艰难、走上一线，坚持不懈地从橡胶精密预成型机的技术更新、售后服务，精益求精不断完善橡胶精密预成型机的各项功能。吴玉彪先生坚信只有适合的，才是最需要的。进入信息化时代，德仁紧跟时代步伐、把握时机，发扬团队精神，为每一位客户、每一台机器都建立一份档案，坚持“时刻对品牌负责，永远让顾客满意”的服务宗旨。

员工是水，企业是舟，水能载舟亦能覆舟；吴玉彪先生的悉心教导、包容、爱护、培养造就了每一位员工对企业的强烈认同感、归属感，造就了一大批有经验的技术型人才，成就了德仁如今强大、团结、快速、高效的服务团队；德仁的每一位员工真正做到了对企业负责、对产品负责、对客户负责、对自己负责。更令人欣慰的是，在德仁成立的17年光景中，没有任何一位员工因为企业原因而离职，因为我们是一家人。德仁的组装人员到公司时间都超于5年，调试人员超于8年，这不仅是质量和服务的强有力保障，也是德仁的骄傲。

时至今日，JYZ系列橡胶精密预成型机以技术先进、品质优良、快速交货和及时服务赢得了全球各界朋友的信任和赞赏，这些成果的取得，凝聚了吴玉彪先生及德仁全体员工的心血和汗水；吴玉彪先生经常说：“德仁的成功离不开这么多年与德仁一路走来的客户、供应商、员工及各界朋友的支持和关心”。

Shanghai Deren Rubber & Plastic Machinery Co., Ltd. is a professional research, development, design, and manufacturing enterprise on rubber precision preformer. The chairman and general manager - Mr. Wu Yubiao, leading technical personnel to develop and research the earliest rubber precision preformer in our country in 1980s; In 1994, as the first successful developer has won the Shanghai science and technology achievement award issued by the government; In 2001, set up Shanghai Deren Rubber & Plastic Machinery Co., Ltd., plant covers an area of 12000 square meters.

For more than 20 years, Mr. Wu Yubiao is disciplined, not afraid of difficulties, going to front, diligent in the rubber precision preformer technology updates, after-sales service, strives for perfection on the improvement of the rubber precision preformer functions. Mr. Wu Yubiao believes that only the suitable is the most needed. Enter the information era, Deren goes with era pace, seizes the moment, carries the team spirit forward, has set up files for every customer and every machine; adhere to the 'responsible for the brand all the time, satisfy customers always "service tenet forever".

Employees are water, the enterprise is a boat, while water can carry a boat, and it can also overturn it. Mr. Wu Yubiao teaches carefully, tolerates, cares and trains every employee to enterprise's strong sense of identification and belongings, has produced a large number of experienced technical personnel, accomplishes Deren's powerful, solidarity, fast and efficient service team; Deren's every employee is really responsible for the enterprise, responsible for the product, responsible for the customer, responsible for selves. More encouragingly, in Deren's establishment of 17 years, Mr. Wu Yubiao does not dismiss any employee, nor there is any employee leave for enterprise reasons, because we are one family. Deren assemblers are more than 5 years, Deren debugging personnel are more than 8 years, this not only is powerful guarantee of quality and service, but also the pride of Mr. Wu Yubiao.

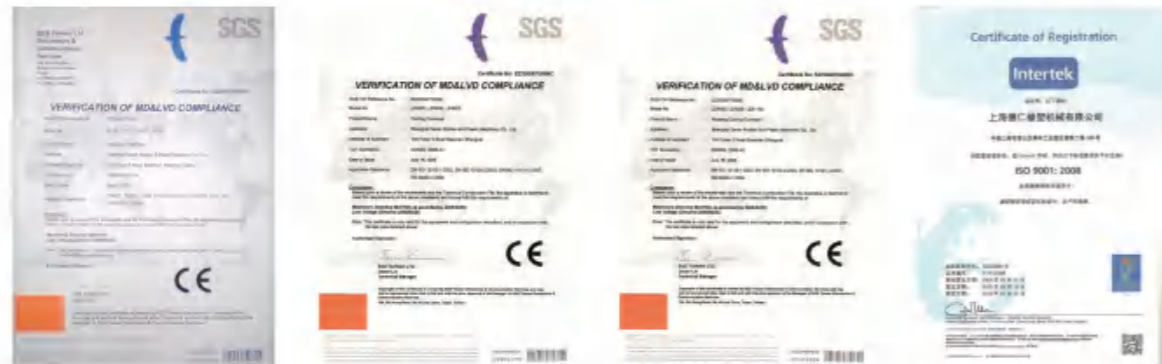
Today, JYZ series rubber precision preformer's advanced technology, excellent quality, fast delivery and timely service has won trust and praise from friends over the world. These achievements condensed by painstaking effort and sweat of Mr. Wu Yubiao and all the staff work in Deren; Mr. Wu Yubiao often says: "his success can't be achieved without support and care from customers, suppliers, employees and friends walk the way along with Deren so many years".

# QUALIFICATION AND HONOR

资质与荣誉

# THE ENTERPRISE CULTURE

企业文化



## 企业核心理念

以德兴企，以仁待人

## 核心价值观

高效、团队、忠诚、执着、责任、创新。

**高效**——果断决策、快速服务、高效运作；迅速行动、及时响应市场，永远领先一步。

**团队**——优势互补、相互协作，创造激情、高效、目标一致、同舟共济、勇于挑战的团队。

**忠诚**——光明磊落、忠于企业、诚信为本。

**执着**——坚定不移、知难勇进、永不放弃、始终如一地对事业和生活积极追求。

**责任**——对客户负责、对产品负责、对企业负责、对自己负责。

**创新**——不断改进、挑战自我、超越自我、完善新体制、研发新成果、拓展新领域。

## ENTERPRISE CORE IDEA:

Vitalizing Enterprise with Virtue, Treating People with Benevolence

## CORE VALUES

Efficiency, Team, Loyalty, Responsibility, Persistence, Innovation.

**Efficiency**-Decisive decisions, quick service, efficient operation; swift action, Timely response to the market, always one step ahead.

**Team**-Complement each other's advantages, mutual collaboration, Creative a team with enthusiasm, efficiency, consistent goal, solidarity and courage to challenge.

**Loyalty**-Frank and Forthright, Loyal to enterprise, Based on sincerity

**Persistence**-Perseverance, Advance despite difficulties, Never give up, Consistency, and pursue career and life positively.

**Responsibility**-Responsible for customers, Responsible for products, Responsible for enterprises, Responsible for selves.

**Innovation**-Never stop improving, Self-challenging, Self-surpassing, Perfecting new system, Researching and developing new achievements, Developing new field

## 企业精神

以质量创造品牌，以服务维护品牌，以创新提升品牌，以品牌促进发展。

## 经营理念

员工理念：自己是本岗位最高的责任者和专家  
高管理念：没有永恒的加冕，只有永远的拼搏

## 处世准则

与其强调不能做的理由，不如一起思考能做的办法。

## 经营方针

以质为纲、以诚为本、以德经营、以仁服务

## 服务宗旨

时刻对品牌负责，永远让顾客满意。

## ENTERPRISE SPIRIT:

Creating Brand by quality, Maintaining brand by service, Promoting brand by innovation, Expediting development by brand

## MANAGEMENT PHILOSOPHY

Employee Idea: Most responsible and specialist in own position.

Senior Management Idea: No eternal coronation, Only forever struggle

## CONDUCT NORM:

Think about ways to do together rather than emphasize on reason can't do.

## GUIDELINE FOR MANAGEMENT

Guideline for Management: Guide principle with quality, Base on honesty, Operate with virtue, Serve with benevolence

## SERVICE AIM

Responsible for the brand all the time, Satisfy customers always

# DEVELOPMENT COURSE

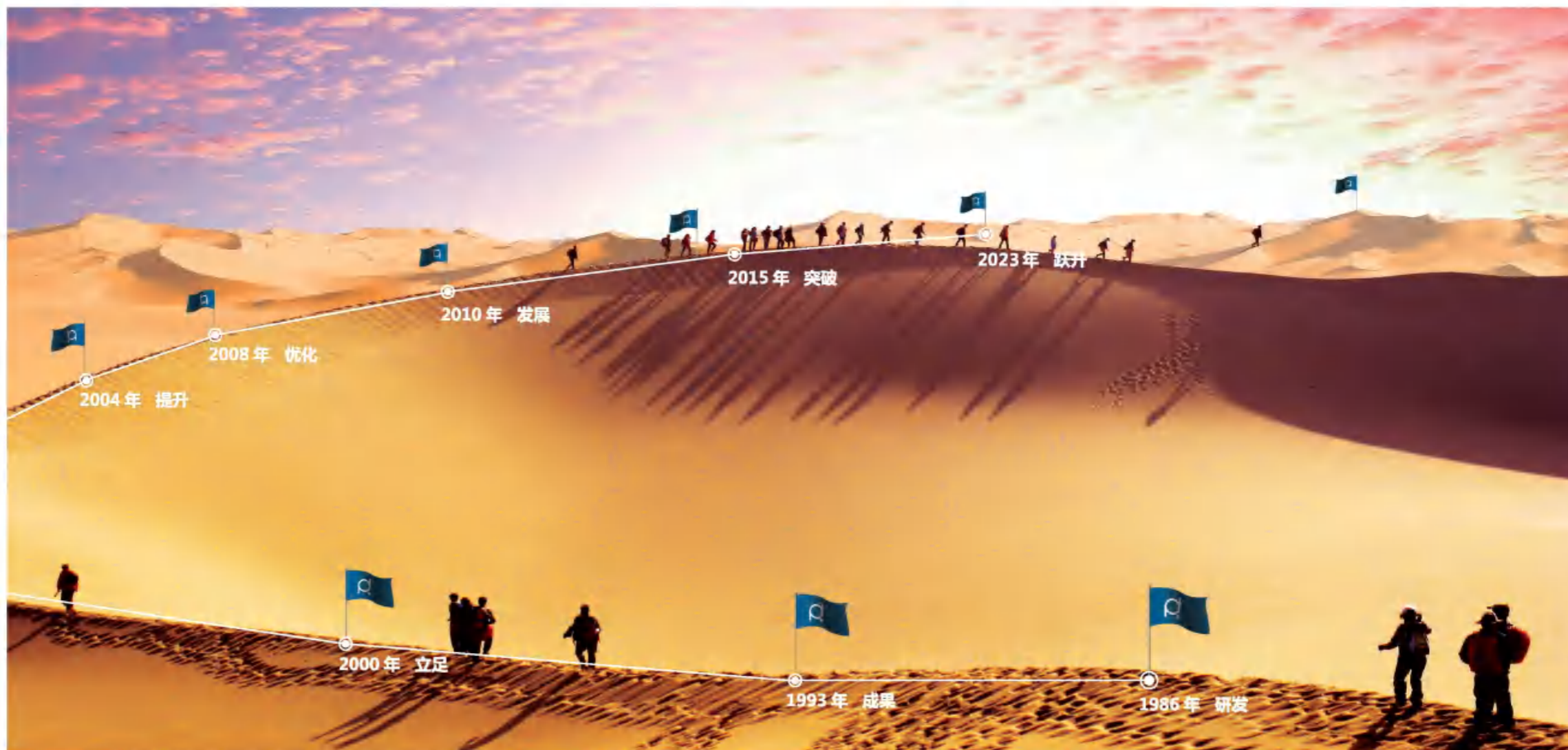
## 发展历程

德仁，与时代同行  
我们见证工业时代的变革。  
德仁，与品质同步  
我们追求突破极致的卓越。  
德仁，与人文同调  
我们关注自我价值的实现。  
德仁，与国际同轨  
我们迎接更多元化的挑战。

30 载风雨同舟，卓越进取、聚众人之力、集众人之智成就德仁的“聚变”

Deren, keep pace with the era,  
We witness the industrial age changes.  
Deren, keep pace with the quality,  
We pursue breakthrough extremely excellence.  
Deren, tone with the humane homology,  
We focus on the realization of self-worth.  
Deren, link with the international track,  
We meet the more diversified challenges.

30 years in the same boat, excellence and progress,  
Gather the force of all people, collect the wisdom of all people, Achieve in Deren's "Fusion".



### 1986年 研发

吴玉彪先生作为上海化工机械四厂技术人员，带领团队研发国内第一代精密预成型机，并于当年投产。

In 1986 Research & Development

Mr. Wu Yubiao as a technical personnel in Shanghai Chemical Machinery No.4 Plant, lead the team to research and develop the domestic first generation precision preformer, went into production in the same year.

### 1993年 成果

吴玉彪先生研发的国内第一代精密预成型机，参加上海市优秀新产品评选，并于1994年获得上海市人民政府颁发的科技进步奖、优秀新产品成果奖。

In 1993 Achievement

Mr. Wu Yubiao researched and developed the domestic first generation precision preformer, participated in the Shanghai Superior New Product Selection, and acquired the Science and technology progress award, accomplishment award of new products issued by Shanghai municipal government in 1994.

### 2001年 立足

上海德仁橡塑机械有限公司正式挂牌成立，并自筹资金建造现代化厂房12000平米，为公司长期发展奠定基础。

In 2001 Based

Shanghai Deren Rubber & Plastic Machinery Co., Ltd. was officially established, and self-raised funds to build a modern plant of 12,000 square meters, laying a foundation for the company's long-term development.

### 2004年 提升

技术取得突破，用变频电机取代四速电机，胶坯重量调整更为方便快捷，重量控制更为精准，切刀更为稳定。另获取预成型机液压装置实用新型专利证书。与土耳其、印度、泰国、巴西等多国代理商达成协议，并通过欧盟CE认证和ISO质量认证。

In 2004 Promotion

Make technical breakthrough, replaced four speed motor with frequency conversion motor, rubber blank weight adjustment is more convenient and quick; weight control is more precise and more stable cutting knife and acquired the utility model patent certificate for preformer hydraulic unit. Concluded agent cooperation agreements with Turkey, India, Thailand, Brazil and others, and pass through the European Union CE certification and ISO quality certification.

### 2008年 优化

研发出电脑版精密预成型机，有效降低工人操作难度和劳动强度，并进一步提高胶坯重量精度，大幅提升生产效率并避免不必要的胶料浪费。

In 2008 Optimization

Developed computerized type precision preformer, reduce the workers operating difficulty effectively, improve the rubber blank weight precision further, improve the production efficiency substantially and avoid unnecessary rubber wastage.

### 2010年 发展

德仁用户成功突破1500家，并与国内20多家科研院所保持紧密的战略合作。

In 2010 Development

Number of Deren's users break through 1500 successfully, keep the close strategic cooperation with more than 20 domestic scientific research institutions.

### 2015年 突破

成功研发出伺服电机控制切割系统，切刀可以非匀速切割，可切任意长度的胶坯；另设备实现与企业网络系统连接，满足用户各种管理、认证等网络化需求，让精密预成型机成功进入现代化管理模式。

In 2015 Breakthrough

Developed cutting system controlled by servo motor successfully, cutter can cut at non-uniform speed and cut rubber blank at random length; The equipment achieves in connection with enterprise network system, meet the user's various management, authentication ect. network requirements, make the precision preformer enter into modern management mode successully.

### 2023年 跃升

德仁用户成功突破3500家，并推出多项成熟的技术，如单螺杆冷喂料齿轮泵技术，得到广泛客户的一致好评。

In 2023 Leap

Deren users have successfully broken through 3500, and introduced a number of mature technologies, such as single screw cold feed gear pump technology, which has been widely praised by customers.

# OUR ADVANTAGES

我们的优势

## The Eight Core Strengths — Achievements Of The First Brand of Chinese Preformer

### 八大核心优势——铸就中国预成型机第一品牌

#### 悠久的历史

30 多年专注研发、生产橡胶精密预成型设备的经验，10 余项荣誉证书及专利资质，见证 15 年成长历程。

#### The long history, Ahead of the pack

More than 30 years' experience to focus on research and development, production of rubber precision preformer, more than 10 honorary certifications and patent qualifications, witness 15 years growth process.

#### 长效的管理模式

为每一位客户、每一台机器都建立一份档案，定期跟踪回访；全自动化控制系统，严格的质量控制体系，120 项出厂检验标准，持续追求零缺陷，综合性价比远超国外品牌的同类产品。

#### The long-term management mode, All-round service

For every customer, set up a file for every machine, follow up regularly.

Full automatic control system, strict quality control system, 120 kinds of factory inspection standard, continuing the pursuit of zero defect, Comprehensive cost-performance far exceeds the same product the oversea brands.

#### 批量化规模化生产

自有厂房占地面积 12000 平方米；集成世界橡胶预成型领域尖端技术，有国内外 2600 多家橡胶制品厂商的客户群体及国内 20 多家科研院所；因产品质量、技术过硬，售后服务客户满意，设备深受国内外知名企业的好评，并被多家大型企业确定为“橡胶精密预成型机”指定供应商。

#### The most large-scale production workshop The world's largest market share

Self-owned plant covers an area of 12000 square meters; Cutting-edge technology integration of the world rubber preforming areas, more than 2600 foreign and domestic rubber products manufacturers and more than 20 domestic research institutes, Due to product quality, technology, quality and after-sales service customer satisfaction, the equipment is well received by many famous enterprises at home and abroad, and many large companies identified as "rubber precision preformer" designated suppliers.

#### 完善的售后服务体系，全方位全天候服务

新购设备免费调试，免费提供技术培训指导；0.5 小时内售后服务给出响应，24 小时内到达现场，全年无休售后服务咨询。我们的服务网络遍及全国各省及全球各地，服务技术人员都是经过公司长期专业培训的售后技术型团队，能及时有效的帮助客户处理掉所遇到的问题。我们将以最有效、最快速、最合理的维护客户的售后服务，是客户的权益得到确实的保证和体现，同时，对于顾客的意见和要求，公司专人负责跟踪处置，确保在最短的时间里给顾客一个最满意的答复。全心全意的为客户服务。

#### The most perfect after-sale service system The omni-directional round-the-clock service

Free debugging for new equipment, provide free technical training guidance; 0.5 hours after service response, reach the site within 24 hours, all year round after-sale service and consulting. Our service network throughout all provinces in the country and around the world, service and technical personnel have been the company long-term professional training after-sales technical team, able to help the customers dispose of the problem timely and effectively. We will maintain customers after-sales service with the most effective, the most rapid, the most reasonable way, to guarantee of the rights and interests of clients get really and reflect. At the same time, for customers' suggestions and requirements, the specially-assigned person will be responsible for tracking and disposal, ensure to provide a most satisfactory answer in the shortest possible time, serve customers whole heartedly.

#### 成熟的全自动化控制系统

由于我们长期以来致力于橡胶精密预成型设备的研究与开发，故公司产出机型零配件全面性、国际化、标准化。机台耐久性的力学设计，采用变频电机，实现切刀无极调速，胶胚重量误差 ±1% 的高精度；运作稳定、静音、高效、精确的油路设计，自动化可控性高。

#### The most sophisticated automatic control system

Due to our long committed to the rubber precision preforming equipment research and development, so the company production machine spare parts are comprehensiveness, internationalization and standardization. The durable mechanical design for machine, Uses the frequency conversion motor, realize stepless speed regulation of the blade and rubber blank weight high accuracy with tolerance of ±1%; Operation is stable, quiet, efficient and precise oil circuit design, high automatic control.



#### 强有力的技术团队

优秀的技术人才，深厚的技术功底，高效的执行力为您解决使用中的任何问题，最优的细节考虑，为您量身定制，最合理的配件选择，为您排除后顾之忧。近年来每年投入的科研经费均占公司总收入的 20% 以上。随着现有国情“用工荒”、“用工成本高”等因素，造成工厂成本越来越高，针对此情况，本公司在设计理念上，本着“自动化”、“提高机台效率”、“加快机台速度”进行高端设计。做到生产一代、研发一代、创新储备一代，始终把握住精密预成型机生产研制的前沿技术。

#### The most powerful technical team

Outstanding technical talent, strong technical strength, efficient execution for you to solve any problems in use, the details of the optimal to consider, tailored for you, the most reasonable choice for accessories, eliminate worries for you. With the existing state of the "labor shortage", "high labor costs" factors, cause the factory cost higher and higher, aiming at this situation, the company on the design concept, in line with the "automation", "improving the efficiency of the machine", "to speed up the machine" for high-end design. Achieve in producing in a generation, Researching and developing a generation, innovating and reserving a generation, always grasp the precision preformer production research at the forefront of advanced technology.

#### 合理的外观设计

公司产品的外观设计皆由公司研发技术人员根据产品的性能和要求，结合设计团队的对公司产品理念的塑造、每种产品的市场需求来提出创意，公司产品外观设计新颖、独特，打破国内机械设备行业的传统设计理念。另产品机身颜色，也可根据客户需求定制指定颜色。

#### The most reasonable design

The product appearance design are developed by the research and development technical personnel according to the product performance and requirement, combined with the design team to shape the concept of the company's products, each product market demand to put forward ideas, product appearance design is novel, unique, break the traditional design concept of domestic machinery industry.

#### 优良的研发技术 — 低能耗产品

因现全球节能环保、耗能降低的生产模式势在必行，公司始终在节约用电、降低能耗方面加大研发力度，以客户降低生产成本为己任，以满足当今能源短缺之市场，进行重点研发此类机型，新型精密预成型机（电脑型）相比普通精密预成型机效率和精度都大大提高，从侧面节省能源。

#### The most excellent research and development technology—Low energy product

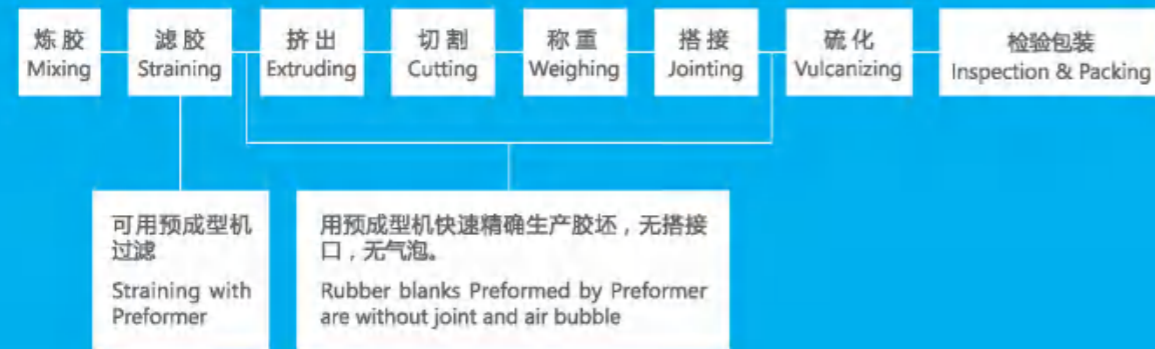
For now the global environmental protection, saving energy to reduce production mode is imperative, company will intensify efforts to save electricity and reduce energy consumption, to reduce the production cost as own duty for customers, in order to meet the current energy shortages of the market, to focus on research and development of such machine, new type of precision preformer (computer) compared to general precision preformer, efficiency and precision are greatly improved to save energy from the side.

# PRODUCTS INTRODUCTION

## 产品介绍

精密预成型机是一款高效率、高精度的胶坯生产设备。胶料适应性强，能挤出各种环形、矩形、条形以及异形的胶坯。特别适合生产密封件、油封、气门嘴、瓶塞、网球、鞋底等产品。它集抽真空、过滤、挤出、切割、称重、计数等多种功能于一体。

The Precision Preformer is a type of rubber blank manufacturing equipment with high efficiency and high accuracy. This machine can process a wide range of rubber material, and is able to extrude rubber blanks of ring, rectangle, strip and odd shapes. It is especially suitable to produce sealing members, oil seal, tyre valves, bottle closures, tennis balls and shoe soles, etc. It integrates a variety of different functions such as vacuuming, filtrating, extruding, cutting, weighing, counting, etc.



# JYZ SERIES PRECISION PREFORMER (COMPUTERIZED TYPE)

## JYZ 系列精密预成型机 (电脑型)

- 采用 PLC 控制和触摸屏操作界面。彩色显示屏引导您方便地进行数据输入，密码保护。
- 可储存 1000 种产品的工艺数据，随时调用。
- 变频电机控制切刀无级变速。
- 电子秤闭环反馈，一键校准胶坯重量。
- 可靠的安全性。机头关闭、切刀旋转、柱塞前进和后退均有互锁装置。
- 故障点图标及文字显示。
- 料筒采用脱离式结构，中心延长，便于清胶。
- 采用抽真空系统，有效减少胶坯中残余空气。
- 不锈钢输送机安全网罩，降低胶料污染。
- 报警器、料筒探照灯、切割装置密封结构、输送机正反转。
- 接受高端定制。
- PLC control system and touch screen operator interface. Color touch screen to input data and password protection.
- 1000 products technics database available to connect anytime.
- Variable inverter controlled infinite speed regulation for cutter speed.
- Closed circuit feedback of electronic scale, one key automatic calibration of the weight of rubber blank.
- Reliable safety performance. There are interlocks when close ram head, the cutter rotates and ram moves forwards and retracts.
- Graphic and text display for failure point and cause
- Barrel adopts separated structure, Extended center, for easy cleaning.
- Reducing residual air in rubber blank by vacuum system.
- Stainless steel conveyer for reducing compound contamination.
- Alarm, barrel searchlight, cutting device seal structure, conveyor forward and backward rotation.
- Accept high-end customization.



### JYZ Series Precision Preformer (computerized type) Technical Parameter:

#### JYZ 系列精密预成型机 (电脑型) 技术参数

项目名称/Items	单位/Unit	JYZ150	JYZ200	JYZ250	JYZ300	JYZ100	JYZ80	JYZ63
料筒内径 Barrel inside diameter	mm	150	200	250	300	100	80	63
总功率 Total power	KW	16	16	19	21.6	16	16	16
最大挤出压力 Max. extruding pressure	MPa	36.8	20.7	17	17	60	60	60
料筒最高温度 Max. barrel temperature	°C	95	95	95	95	95	95	95
口型最大直径 Max. die diameter	mm	125	125	190	300	80	60	60
胶坯重量范围 Rubber weight range	g	0.5-100	0.5-200	0.5-2000	0.03-6000	0.3-100	0.3-100	0.3-100
胶坯重量精度 Rubber blank weight accuracy	%	±1.0	±1.0	±1.0	<±1.0	±1.0	±1.0	±1.0
一次装胶量 Single feeding volume	kg	13-15	22-30	60-70	100	5	2	1
切刀转速 Cutter speed	r/min	35-300	35-300	23-300	35-300	0.5-400	0.5-400	0.5-400
裸机外形尺寸 (L×W×H) External dimension	mm	3.77×1.2×1.62	3.9×1.2×1.64	5.08×1.25×1.64	5.6×1.35×1.85	2.2×0.76×1.7	2.2×0.76×1.7	2.2×0.76×1.7
机器重量 Weight	t	2.3	2.5	3.6	5.5	1.5	1.5	1.5
天平架 Balance frame	m	0.44×0.44×0.96						



# JYZH SERIES HIGH PRESSURE PRECISION PREFORMER

JYZH 系列高压精密预成型机

## JYZH SERIES HIGH PRESSURE PRECISION PREFORMER

### JYZH 系列高压精密预成型机

JYZH 系列高压精密预成型机最高工作压力可达 40Mpa, 可过滤各种硬度的胶料, 效率更高, 可实现边过滤边切割, 过滤胶料可添加促进剂, 过滤精度可达 300 目, 且不会产生胶烧。采用人性化设计, 实现操作简单、开启机头省力、全方位的安全控制、醒目提示, 是一种高效率、高精度胶坯生产设备, 胶料适用性强, 能挤出各种环形、矩形、条形以及异形的胶坯。特别适合生产密封件、造粒、气门嘴、瓶塞、网球、油封、鞋底、汽车减震等产品, 它集抽真空、过滤、挤出、切割、称重、计数等多功能于一体。

The max.working pressure for JYZH200 high pressure precision preformer is up to 40 Mpa.It can strain rubber compound of different hardness with higher efficiency,

It can achieve in preforming while straining,and strain the rubber compound with accelerant. The strain accuracy is up to 300 meshes,rubber compound will not be scorched. This precision preformer is with humanized design and easy operation,and less force to open ram head,the comprehensive safety control and impressive notice to ensure better security performance. It is a type of rubber blank manufacturing equipment with high efficiency and high accuracy. This machine can process a wide range of rubber material, and is able to extrude rubber blanks of ring, rectangle, strip and odd shapes. It is especially suitable to produce sealing members, oil seal, tyre valves, bottle closures, tennis balls and shoe soles, etc. It integrates a variety of different functions such as vacuuming, filtrating, extruding, cutting, weighing, counting, etc.

- 压力更高, 挤出速度更快, 可实现边过滤边切割, 防止胶料二次污染。
- 采用 PLC 控制和触摸屏操作界面。彩色显示屏引导您方便地进行数据输入, 密码保护。
- 可储存 1000 种产品的工艺数据, 随时调用。
- 变频电机控制切刀无级变速。
- 电子秤闭环反馈, 一键校准胶坯重量。
- 可靠的安全性。机头关闭、切刀旋转、柱塞前进和后退均有互锁装置。
- 故障点图标及文字显示。
- 料筒采用脱离式结构, 中心延长, 便于清胶。
- 采用抽真空系统, 有效减少胶坯中残余空气。
- 不锈钢输送机安全网罩, 降低胶料污染。
- 全自动液压开关门卡, 降低劳动强度, 提高生产效率。
- 接受高端定制。

- The pressure is higher, the extrusion speed is faster, that can realize the edge filter edge cutting, to prevent the secondary pollution of the compound.

- PLC control system and touch screen operator interface. Color touch screen to input data and password protection.
- 1000 products technics database available to connect anytime.
- Variable inverter controlled infinite speed regulation for cutter speed.
- Closed circuit feedback of electronic scale, one key automatic calibration of the weight of rubber blank.
- Reliable safety performance. There are interlocks when close ram head, the cutter rotates and ram moves forwards and retracts.
- Graphic and text display for failure point and cause
- Barrel adopts separated structure, Extended center, for easy cleaning.
- Reducing residual air in rubber blank by vacuum system.
- Stainless steel conveyer for reducing compound contamination.
- Fully automatic hydraulic door opening and closing card can reduce labor intensity and improve production efficiency.
- Accept high-end customization.

### JYZH Series High Pressure Precision Preformer Technical parameter:

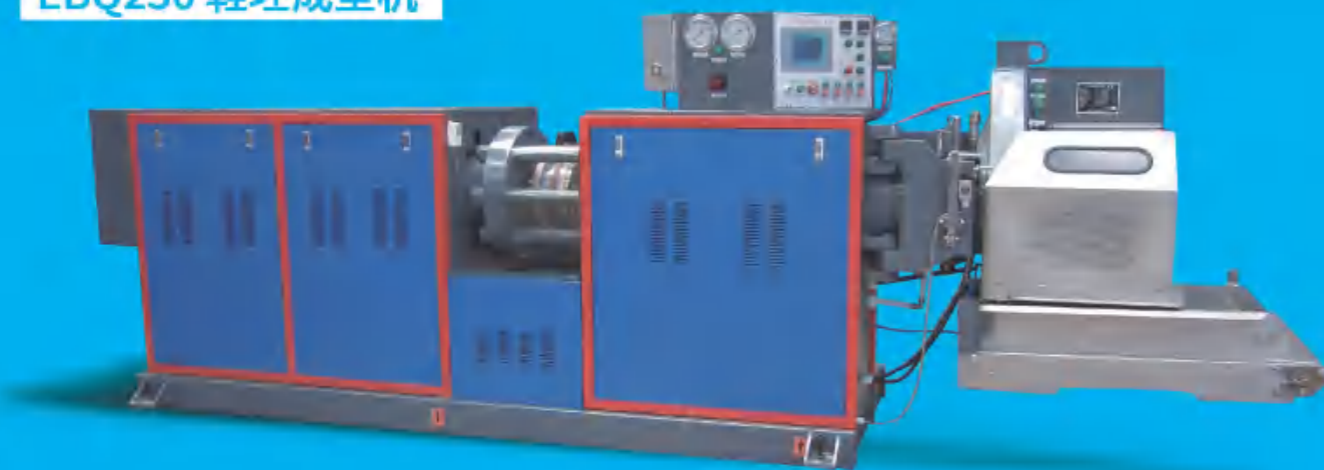
#### JYZH 系列高压精密预成型机技术参数

项目名称 / Items	单位 / Unit	JYZ200H	JYZ250H
料筒内径 Barrel Inside Diameter	mm	200	250
总功率 Total power	KW	21.6	21.6
最大挤出压力 Max. extruding pressure	MPa	40	25×36
料筒最高温度 Max. barrel temperature	° C	95	95
口型最大直径 Max. die diameter	mm	125	190
胶坯重量范围 Rubber weight range	g	0.1 ~ 300	0.1 ~ 5000
胶坯重量精度 Rubber blank weight accuracy	%	±1.0	±1.0
料筒容积 Volume of the barrel	L	25/40	65
切刀转速 Cutter speed	r/min	35 ~ 300	23 ~ 300
裸机外形尺寸 (L×W×H) External dimension	m	4.7×1.35×1.85	5.6×1.35×1.85
机器重量 Weight	t	4.6	5



# EBQ250 FOOTWEAR PRECISION PREFORMER

## EBQ250 鞋坯成型机



- 采用PLC控制和触摸屏操作界面。彩色显示屏引导你方便的进行数据输入，密码保护。
- 可储存1000种产品的工艺数据，随时调用。
- 变频电机控制切刀无极变速。
- 电子屏闭环反馈，控制胶胚重量。
- 可靠的安全性，机头关闭，切刀旋转，柱塞前进和后退均匀互锁装置。
- 故障点图标及文字显示。
- PLC control system and touch screen operator interface. Color touch screen to input data and password protection.
- 1000 products technics database available to connect anytime.
- Variable inverter controlled infinite speed regulation for cutter speed.
- Weigh scale feedback close loop for blank weigh adjustment.
- Reliable safety performance. There are interlocks when close ram head, the cutter rotates and ram moves forwards and retracts.
- Graphic and text display for failure point and cause.

### EBQ250 Footwear Precision Preformer Technical Parameter

#### EBQ250 鞋坯成型机 技术参数

项目名称 / Items	单位 / Unit	EBQ250
料筒内径 Barrel inside diameter	mm	250
最大挤出压力 Max. extruding pressure	Mpa	20
口型最大长度 Max. die length	mm	300
胶坯重量范围 Rubber weight range	g	0.3~2000
胶坯重量精度 Rubber blank weight accuracy	%	±1
一次装胶量 Single feeding volume	L	65
切刀转速 Cutter speed	r/min	23~300
外形尺寸 (L×W×H) External dimension	M	5.08×1.25×1.64
重量 Weight	T	3.6



# RS SERIES RAM RUBBER STRAINER

## RS 系列柱塞式滤胶机



- 节能：相较于螺杆机更为节能，平均每小时耗电7度左右；
- 高效：每小时产能300-900kg，如60度EPDM，过滤100目，每小时产能约为600kg；
- 高精度：柱塞强制推动，标准设备压力可达20MPa，高压设备最高可达40MPa，适用于EPDM/NBR/FKM等常用胶种，最高可过滤300目，硅胶可过滤至500目，相比螺杆机过滤精度更高；
- 稳定：柱塞推动过程相比螺杆挤出不开温，可加硫过滤，杜绝橡胶焦烧情况产生；
- 便捷：料筒采用脱离式结构，料筒完全脱开方便清理，便于更换胶种，无清理死角；
- 安全：可靠地控制系统与互锁装置，杜绝工伤情况产生；
- PLC与触摸屏控制，可存储工艺参数，方便调用，对操作工人要求不高。
- Energy Conservation: More energy saving than the screw machine, the average power consumption per hour is about 7kw/h.
- High Efficiency: The capacity of 300-900kg per hour. For example: for EPDM rubber, hardness of 60 Shore, and straining mesh size#100, then the capacity will be 600kg/h.
- High Accuracy: with the ram to force through forward, the pressure of the standard equipment is up to 20MPa, and the high pressure equipment can reach 40MPa, It is mainly used of EPDM/NBR/FKM and other common rubber material, and maximum straining accuracy is up to mesh#300. The straining accuracy can reach mesh#500 for silicon rubber. This machine has higher straining accuracy, compared with the screw machine.
- Stabilization: The ram push forward process is not heating-up compared with the screw extrusion, It is can adding vulcanizing agent and other rubber accelerant for straining, to stop rubber scorching of thing ever happening.
- Convenient: The barrel adopts separated structure, center extended, It is easy to clean, easy to replace the rubber, no clean dead Angle;
- Safety: Reliable control system and interlock device, avoiding work injury.
- PLC and touch screen control, can store process parameter to make it convenient for extracting at any times, and low requirement for the operators.

### RS Series Ram Rubber Strainer Technical Parameter

#### RS 系列柱塞式滤胶机技术参数

项目名称/Items	单位/Unit	RS150	RS200	RS250	RSH200	RSH250	RS100	RS80	RS63
料筒内径/Barrel inside diameter	mm	150	200	250	200	250	100	80	63
总功率/Total power	KW	14	14	17.5	17.5	17.5	14	14	12
最大挤出压力/Max. extruding pressure	MPa	36.8	20.7	20.7	40	36.8	60	60	60
料筒最高温度/Max. barrel temperature	°C	95	95	95	95	95	95	95	95
一次装胶量/Single feeding volume	kg	12	25	60	25/40	60	5	2	1
外形尺寸(L×W×H)/External dimension	m	2.78×1.2×1.64	2.85×1.2×1.64	3.97×1.35×1.64	3.7×1.35×1.85	4.9×1.35×1.85	2.0×0.76×1.7	2.0×0.76×1.7	2.0×0.76×1.7
重量/Weight	t	2	2.17	3.2	4.1	4.5	1.2	1.2	1.2

# SELECTION FUNCTION

## 选配功能



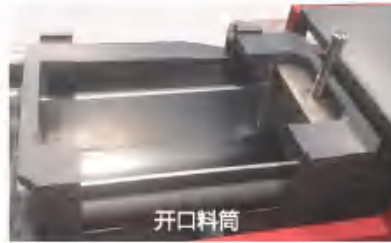
伺服切割系统

### 伺服切割系统

刀速0.5-400转每分钟，瞬时切割速度50-150转每分钟，适合切割较大产品和较长产品，避免闷车情况产生。

### Servo Cutting System

Its cutter speed is 0.5-400/rpm, and instant speed is 50-150/rpm. It is mainly suitable for cutting large and long products in order to avoid blocking run situation.



开口料筒

### 开口料筒：

机器后端投料，投料时无需打开机头，机头余料无需取出，降低工人劳动强度，提高生产效率，适合大批量产品使用。

### Opening cylinder:

Feeding at the rear-end of the machine, there is no need to open the ram head when feeding, and no need to take out the residual material of ram head, which can reduce the intensity of labor and improve the productivity. It is suitable for mass production.



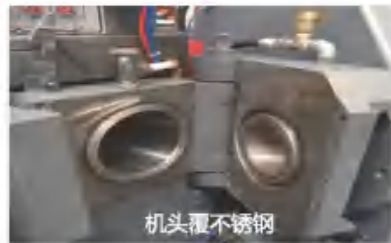
伸缩输送机

### 伸缩输送机：

设备启动后初始阶段胶坯重量不稳定，当胶坯精度达到贵司标准后，点动按钮输送机向前伸缩，触摸屏上开始计数，有效区分合格与不合格胶坯。

### Telescopic conveyor:

the weight of rubber blanks during the beginning performing is not stable, when the accuracy of the rubber blank meets your criterion, press the button to force the conveyor move forward, and the counting will start on the touch screen. This will effectively distinguish between qualified and unqualified rubber blanks.



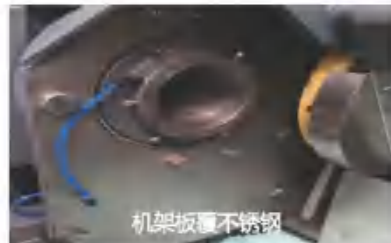
机头覆不锈钢

### 机头覆不锈钢：

相较传统喷漆工艺，避免油漆脱落等污染胶料，便于清理。

### Coating stainless steel head:

compared with traditional spraying process, it can avoid the contamination caused by peeling paint, and make it convenient to clean.



机架板覆不锈钢

### 机架板覆不锈钢：

较传统喷漆工艺，完全避免油漆脱落等污染胶料，便于清理。

### The frame plate stainless steel:

compared with traditional spraying process, it is completely can avoid the contamination caused by peeling paint, and make it convenient to clean.



定长切割系统

### 定长切割系统：

定长切割，光感控制与切刀控制结合，有效控制胶条长度，主要应用为硅胶混炼胶过滤切割、配合供应注射机使用等用途。

### Fixed length cutting system:

Fixed length cutting is the combination of light sensing control and cutting knife control, which can effectively control the length of rubber strip. It is mainly used for filter cutting of Silicone Compound, and the use of supply injection machine, and other related uses.



全屏触摸控制

### 全屏触摸控制：

全屏模式、温度设定、油温显示等参数均直接在触摸屏上显示，操作更加直观简单。

### Full-size touch operation:

Fullscreen mode, temperature setting, oil temperature display and other parameters are directly in the touch screen, the operation is more intuitive and simple.



扫码枪

### 扫码枪：

扫描生产工艺条码，工艺参数直接调用，操作可视化，避免工人输入数据失误。

### Scavenging gun:

Scanning the bar code of the production process, allowing the process parameters to be invoked directly. It is operation visualization to avoid data errors by workers.



数据接口

### 数据接口：

提供RS232等数据接口，便于设备与ERP等管理系统连接，实现现代化管理。

### Data interface:

RS232 and other data interfaces are provided to facilitate the connection of equipment and ERP and other management systems to realize modern management.



位移传感器

### 位移传感器：

可根据生产量在触摸屏上设置柱塞前停后停位置，可在触摸屏上显示料筒中胶料余料，提高生产效率的同时又增加可视化程度。

### Displacement sensor:

The front stop and back stop position of the ram can be set on the Touch screen according to production capacity, also display the remaining material on the touch screen. It not only improves production efficiency, but also increases the degree of visualization.



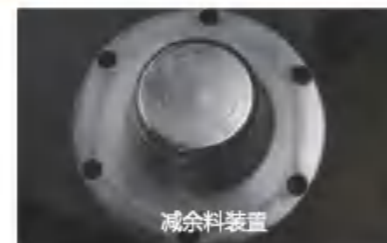
全自动液压开关门卡

### 全自动液压开关门卡：

液压驱动开关门卡，相较传统人工开关门，更为简便、安全、省力、高效。

### Automatic Hydraulic Door Card Buckle:

It is hydraulic drive to open and close the buckle. Compared with the traditional manual opening and closing, it is easier, safer, less efficient and more efficient.



减余料装置

### 减余料装置：

进一步减少机头胶料残余，胶料利用率更高，同样由于锥度结构会导致胶料受压不均，重量精度偏差相较标准机头更大一些。

### Device Of Reducing Residual Material:

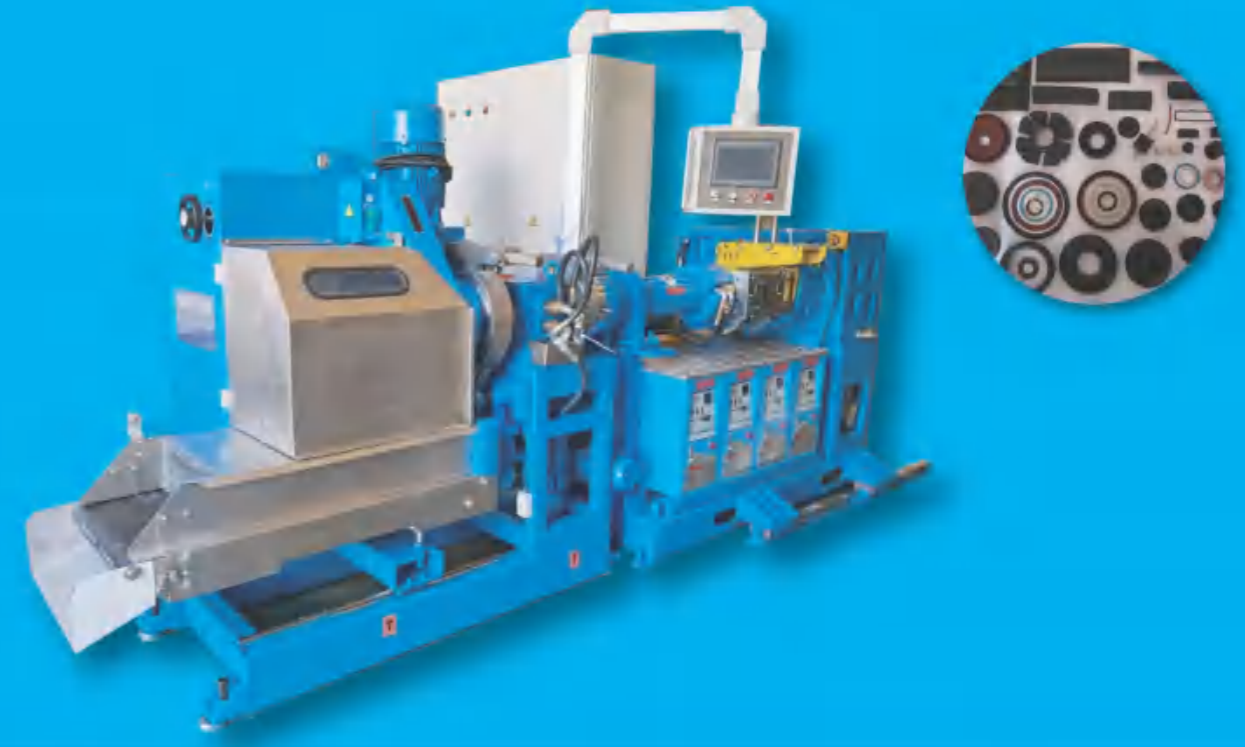
The residual material on the ram head is further reduced to make the utilization rate of rubber material is higher. Also because the taper structure leads to the uneven compression of the rubber, the deviation of the weight accuracy is greater than that of the standard ram head.

# COLD FEED SINGLE-SCREW PREFORMER

## 冷喂料螺杆预成型机

冷喂料螺杆预成型机是一种高效率、高精度的胶坯生产设备，工作原理为条状冷料经过销钉螺杆+齿轮泵塑炼、传送、切割成固定大小和形状。适用于各种橡胶、硅胶制品的坯料生产。精度高、占地面积小、可独立工作、生产过程简便、容易操作。能生产各种形状的胶坯，如：环形、长条形、圆形等；适合生产橡胶杂件、密封件、油封、气门嘴、网球、鞋底等各种橡胶制品。

Cold feed screw preformer is a kind of high efficiency and high precision rubber blank production equipment, the working principle is strip-shaped cold materials through pin-gear pump plasticizing, transmitting, and cutting into fixed size and shape. Suitable for the production of various rubber and silicone products. High accuracy, small area, can work independently, easy to produce, and easy to operate. It can produce various shapes of glue, such as: ring, long strip, circular, etc.; Suitable for the production of various rubber products such as rubber miscellaneous parts, seals, oil seals, Valve nozzle, tennis, shoe soles, etc.



### Cold Feed Screw Preformer Technical description

#### 冷喂料螺杆预成型机技术说明

- 齿轮泵控制，单驱动结构或者双驱动结构。
- 冷喂料螺杆预成型机是把常温条状混炼胶连续不间断的通过齿轮泵控制切成客户需求的形状和重量，胶坯重量精度控制在±0.5%以内。
- PLC控制，工艺参数存储，直接调用，操作简便。
- 齿轮泵和螺杆、机头采用电动脱离结构，有效降低劳动强度，方便更换胶料，便于清洗。
- 输送机网罩、输送机均采用不锈钢材质防止胶料污染。
- 电子秤回路反馈，一键校准胶坯重量。
- 设备故障报警及图标显示故障位置，定时提醒工人抽检、校准胶坯重量。
- 机头、切刀等装置互锁，全方位防护，有效避免工伤出现。
- 系统压力、挤出压力采用数字化显示在触摸屏。新品试制时，PLC运算提供参考数据，进一步简化操作流程。
- 机头全部采用不锈钢密封，防止胶料洒落地面。（洒落地面污染环境、胶料浪费）。

- Gear pump control, single-drive structure or double-drive structure.
- The cold feeding screw preformer is to cut the normal temperature strip compounding rubber into the shape and weight required by the customer continuously and uninterruptedly through the gear pump control, and the precision of the rubber blank weight is controlled within ±0.5%.
- PLC control, process parameter storage, direct recall, easy operation.
- Gear pumps and screws and heads adopt an electric detachment structure to effectively reduce labor intensity and facilitate the replacement of rubber and facilitate cleaning.
- The conveyor mesh, conveyor, etc. use stainless steel to prevent rubber pollution.
- Consultation feedback of electronic scale, one-click calibration of the weight of the blanks.
- Equipment fault alarm and icon display the fault position, and regularly remind workers to check and calibrate the weight of the blanks.
- The head and cutter are interlocked to provide all-round protection and effectively avoid work injuries.
- System pressure and extrusion pressure are digitally displayed on the touch screen, PLC calculations provide reference data for new product trial production, further simplifying the operation process.
- The head is sealed with stainless steel to prevent the glue from spilling on the ground. (Spilling on the ground pollutes the environment and wastes rubber material)

### Technical Parameters of DRL Series Cold Feeding Precision Preformer

#### DRL-Q系列冷喂料橡胶预成型机技术参数

项目名称/Items	单位/Unit	DRL50-Q	DRL75-Q	DRL90-Q	DRL120-Q	DRL150-Q
螺杆直径/Screw Diameter	mm	50	75	790	120	150
螺杆长径比/Draw Ratio of Screw	L/D	12:1	12:1	8:1	8:1	8:1
螺杆转速/Screw Rotation Speed	Rpm	5-60	5-60	5-60	5-60	5-60
齿轮转速/Speed of Gear Pump	Rpm	4-40	4-40	4-40	4-40	4-40
切刀速度/Cutter Speed	Rpm	0.5-400	0.5-400	0.5-400	0.5-400	0.5-400
总功率/Total Power	Kw	25	45	45	75	115
最大挤出压力/Max.Extrusion Pressure	Mpa	35	35	35	35	35
模温机温度/Temperature Controlled by Mould Temperature Machine	°C	20-90	20-90	20-90	20-90	20-90
口型最大直径Max.Die Diameter	Mm	50	50	125	190	190
胶坯重量范围/Rubber Blank Weight Range	g	0.3-100	0.3-200	0.5-3000	0.5-6000	0.5-6000
重量精度(99%橡胶)/Weight Accuracy(99%Rubber)	百分比/Percentage	±1.0%	±1.0%	±1.0%	±1.0%	±1.0%
最大产能/Max.Capacity	Kg/H	70	120	250	450	750
机头打开方式/Head Opening Type		左右/Left Right	左右/Left Right	左右/Left Right	左右/Left Right	左右/Left Right
裸机外形尺寸(L×W×H)/Outline Dimension of Bare Machine	m	2.7×1.0×2.0	3.5×1.5×1.65	3.5×1.5×1.65	4.3×1.7×1.65	4.3×1.7×1.65
机器重量/Machine Weight	T	1.5	3	6.5	8	10

# DOUBLE-SHAFT HOT FEED SINGLE-SCREW GEAR PUMP PRECISION PREFORMER

## 双挽热喂料螺杆预成型机

双挽热喂料螺杆预成型机是一种高效率、高精度的胶坯生产设备，工作原理为团状或条状热料经过螺杆+齿轮泵传送、切割成固定大小和形状。适用于各种橡胶、硅胶制品的坯料生产，精度高、占地面积小，可独立工作，生产过程简便，容易操作，能生产各种形状的胶坯，如：环形、长条形、圆形等；适合生产橡胶杂件、密封件、油封、气门嘴、网球、鞋底等各种橡胶制品。

Double-Shaft Warm Feed Screwing Precision Preformer works in a high degree of efficiency and accuracy. The warmly-fed material is pressed and conveyed all the way through the screw and gear pump, and finally strained and cut in demanded shapes. It applies to all kinds of rubber and silicone material while being compact and easy to operate, streamlining the production. The preformer can produce O-rings, strips, circular blanks, etc. In addition to various shapes, the produced rubber blanks are commonly used as seals, valves, tennis balls, soles and so on.



### Double-Shaft Hot Feed Screwing Precision Preformer Technical description

#### 双挽热喂料螺杆预成型机技术说明

- 齿轮泵控制，单驱动结构或双驱动结构。
  - 双挽热喂料螺杆预成型机是把团状或条状热料经过螺杆+齿轮泵传送、切割成固定大小和形状，胶坯重量精度控制在±0.5%以内。
  - PLC控制，工艺参数存储，直接调用，操作简便。
  - 齿轮泵和螺杆、机头采用电动脱离结构，有效降低劳动强度，方便更换胶料，便于清洗。
  - 输送机网罩、输送机采用不锈钢材质防止胶料污染。
  - 电子秤闭环反馈，一键校准胶坯重量。
  - 设备故障报警及图标显示故障位置，定时提醒工人抽检、校准胶坯重量。
  - 机头、切刀等装置互锁，全方位防护，有效避免工伤出现。
  - 机头探照灯，方便清理，避免死角清理不到位的情况出现。
  - 系统压力、挤出压力采用数字化显示在触摸屏上。
  - 新品试制时，PLC运算提供参考数据，进一步简化操作流程。
  - 机头全部使用不锈钢密封，防止胶料洒落地面（洒落地面污染环境、胶料浪费等）。
- Double-drive structured gear pump
  - A high degree of accuracy between -0.5% and 0.5%
  - Computerized parameters, ready for repetitive use under PLC control
  - Electronic control over the opening and closing among machine head, gear pump and the screw, saving labour upon cleaning.
  - Conveyor frame and its net cover are made of stainless steel to avoid mixture of rubber and rust.
  - Electric scale closed circuit feedback, one key to automatically adjust the cutting speed to target the required weight of rubber blanks.
  - Machine error alarm and icons on the touch screen identify what fails to work, timely reminding workers of examining and correcting the rubber blank weight.
  - Machine head, cutter and other devices are interlocked, well protected, effectively avoiding the occurrence of any kinds of injuries.
  - With machine head searchlight, every corner is visible and reachable for thorough cleaning.
  - The pressures of system and extrusion are displayed on the touch screen.
  - References from PLC calculations for new blanks production.
  - The cutter motor is covered by the stainless steel cover, which prevents rubber blanks from spilling on the ground (polluting the environment, wasting rubber, etc.).

### Technical Parameters of DRL Series Hot Feeding Precision Preformer

#### 双挽热喂料螺杆预成型机技术参数

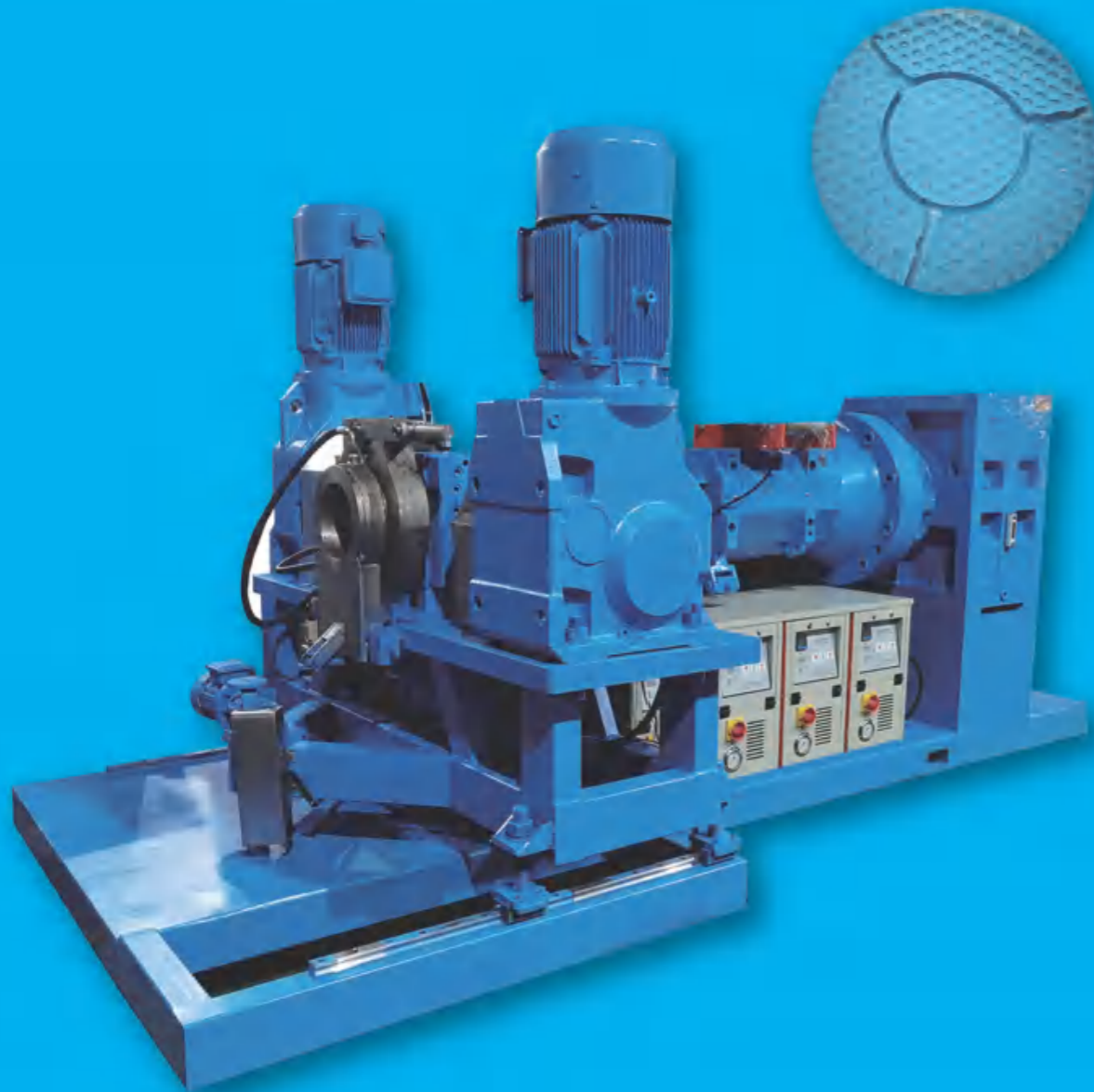
项目名称/Items	单位/Unit	DRL150W-Q	DRL200W-Q	DRL250W-Q
螺杆直径/Screw Diameter	mm	150	200	250
螺杆长径比/Screw Length-Diameter Ratio	L/D	6:1	6:1	5.4:1
螺杆转速/Screw Rotary Speed	Rpm	0-40	0-40	0-40
齿轮泵转速/Gear Pump Rotary Speed	Rpm	0-40	0-40	0-40
切刀转速/Cutter Speed	Rpm	0-400	0-400	0-400
总功率/otal Power	KW	55	75	110
最大挤出压力/Max. Extrusion Pressure	MPa	35	35	35
模温机控温/Mould Machine Temperature	°C	20-90	20-90	20-90
口型最大直径/Max. Die Diameter	mm	190	190	190
胶坯重量范围/Rubber Blank Weight Range	g	0.1-6000	0.1-6000	0.1-6000
重量精度（99%胶料）/Weight Accuracy (99% Compound)	百分比 Percentage	≤±0.5%	≤±0.5%	≤±0.5%
最大产能/Max. Capacity	kg/h	750	1200	1800
外形尺寸(L×W×H)/Exterior Dimensions	m	4.5×1.9×2.2	4.8×1.9×2.2	5.0×1.9×2.2
机器重量/Machine Weight	t	8	11	14
加料方式/Feeding Types	冷/热Cold/Hot	热 Hot	热 Hot	热 Hot

# COLD FEED SINGLE-SCREW GEAR PUMP RUBBER FILTER

## 冷喂料螺杆滤胶机

冷喂料螺杆滤胶机是一种将橡胶中的杂质（铁屑木屑等）过滤出来的设备，工作原理为条状常温混炼胶经过螺杆+齿轮泵传送、过滤。适用于各种混炼胶的过滤；广泛应用于橡胶杂件、密封件、汽配件、油封等产品的生产工艺中。

Cold feed screw rubber filter is a kind of equipment to filter out the impurities (iron chips, wood chips, etc.) from rubber, and the working principle is that the strip of normal temperature compounding rubber is transferred and filtered by screw + gear pump. It is suitable for filtering various kinds of rubber compounds; it is widely used in the production process of rubber miscellaneous parts, seals, auto parts, oil seals and other products.



## Cold feed screw rubber filter Technical Highlights

### 冷喂料螺杆滤胶机技术说明

- 齿轮泵控制，单驱动结构或者双驱动结构。
  - 冷喂料螺杆滤胶机是把常温条状混炼胶连续不间断的通过齿轮泵控制过滤。
  - PLC控制，工艺参数存储，直接调用，操作简便。
  - 齿轮泵和螺杆、机头采用电动脱离结构，有效降低劳动强度，方便更换胶料，便于清洗。
  - 可加硫过滤，温升高，不会产生胶烧情况。设备故障报警及图标显示故障位置。
  - 机头探照灯，方便清理，避免死角清理不到位情况出现。
  - 系统压力、挤出压力采用数字化显示在触摸屏上。
  - 新品试制时，PLC运算提供参考数据，进一步简化操作流程。
- Gear pump control, single-drive structure or double-drive structure.
  - The cold-feeding screw filter is a continuous, uninterrupted filtration of normal temperature strip compounding rubber through a gear pump control.
  - PLC control, process parameter storage, direct recall, easy operation.
  - Gear pumps and screws and heads adopt an electric detachment structure to effectively reduce labor intensity and facilitate the replacement of rubber and facilitate cleaning.
  - Sulfur filtration can be added, low temperature rise, no rubber scorching situation. Equipment failure alarm and icons display the location of the failure on the touch screen.
  - The head search light is convenient to clean up and avoid the dead corner cleaning situation.
  - System pressure and extrusion pressure are digitally displayed on the touch screen.
  - PLC calculations provide reference data for new product trial production, further simplifying the operation process.

## Double-Shaft Cold Feed Screwing Strainer Key Parameters

### 冷喂料螺杆滤胶机技术参数

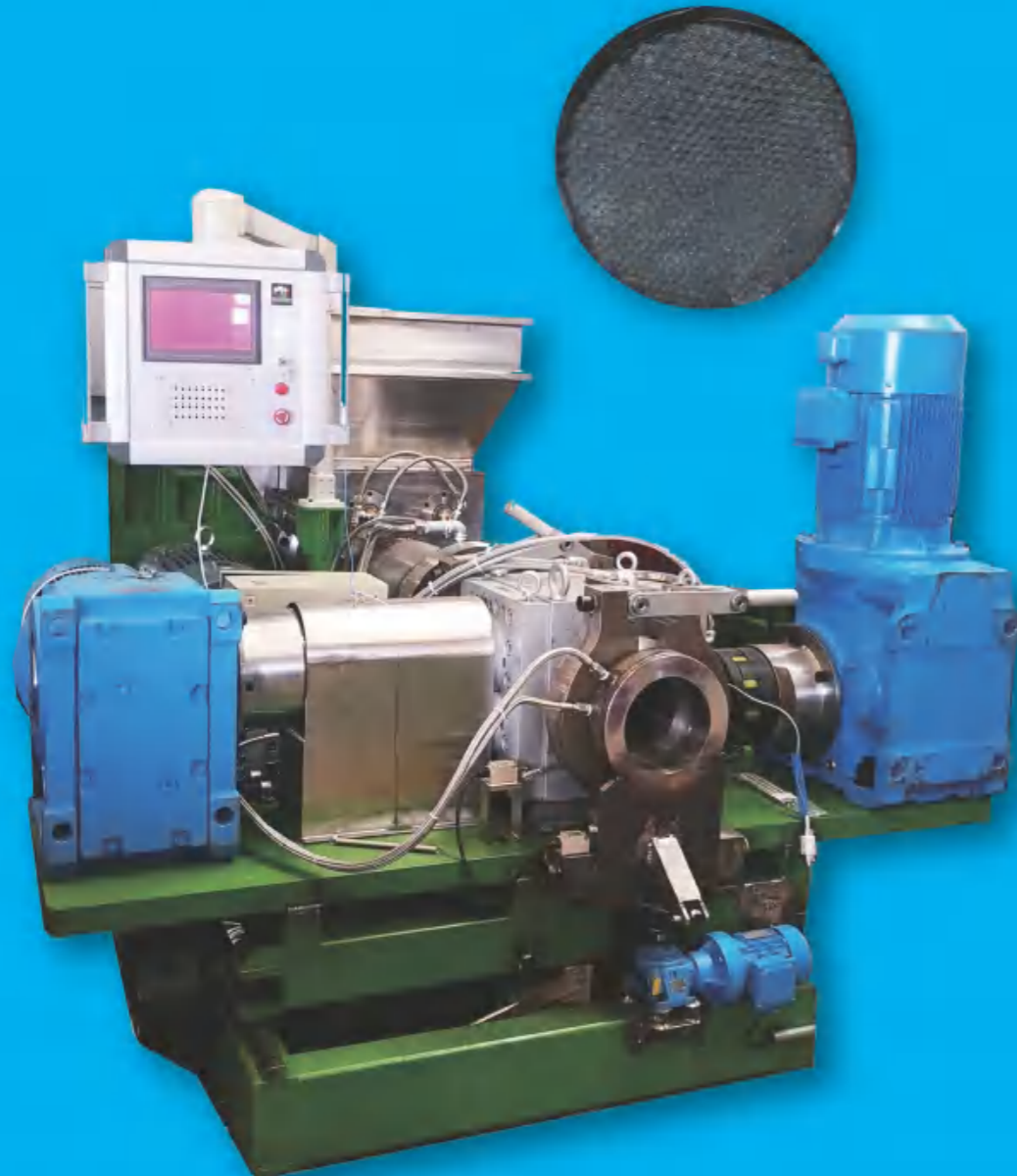
项目名称/Items	单位/Unit	DRL75	DRL90	DRL120	DRL150
螺杆直径/Screw Diameter	mm	75	90	120	150
螺杆长径比/Screw Length-Diameter Ratio	L/D	12:1	8:1	8:1	6:1
螺杆转速/Screw Rotary Speed	Rpm	0-60	0-60	0-60	0-40
齿轮泵转速/Gear Pump Rotary Speed	Rpm	0-40	0-40	0-40	0-40
切刀转速/Cutter speed	Rpm	0-400	0-400	0-400	0-400
总功率/Total Power	KW	35	50	70	110
最大挤出压力/Max. Extrusion Pressure	MPa	35	35	35	35
模温机控温/Mould Machine Temperature	°C	20-90	20-90	20-90	20-90
最大产能(过滤目数影响产能)/Max. Capacity	kg/h	120	250	450	750
外形尺寸(L×W×H)/Exterior Dimensions	m	2.5×1.5×1.65	3.0×1.7×1.65	3.3×1.7×1.65	3.5×1.7×1.65
机器重量/Machine Weight	t	3.7	6.0	7.5	9.5
加料方式/Feeding Types	冷/热 Cold/Hot	冷/Cold	冷/Cold	冷/Cold	冷/Cold
最高过滤目数(目数越高产能越低)/Max. Unit Mesh Number	目/mesh	300	300	300	300

# DOUBLE-SHAFT HOT FEED SINGLE SCREW GEAR PUMP RUBBER FILTER ②

## 双挽热喂料螺杆滤胶机

双挽热喂料螺杆滤胶机是一种将橡胶中杂质（铁屑、木屑等）过滤出来的设备，工作原理为团状或条状热料经过螺杆+齿轮泵传送、过滤。适用于各种混炼胶的过滤；广泛应用于橡胶杂件、密封件、汽配件、油封等产品的生产工艺中。

Double-Shaft Warm Feed Screwing Strainer was designed to filter rubber compounds, removing such impurities as iron and wood to gain excellent quality rubber compounds. The heated material is fed through the double shaft into the screw and gear pump for grinding before being further conveyed for straining. It has been widely used as unalienable part of the craft in manufacturing various kinds of seals, automotive parts, etc.



## Double-shaft hot feed single-screw gear-pump rubber filter

### 双挽热喂料螺杆滤胶机技术说明 ▶

- 齿轮泵控制，单驱动结构或双驱动结构。
  - 双挽热喂料螺杆滤胶机是把团状或条状热料连续不间断的通过螺杆+齿轮泵控制过滤。
  - PLC控制，工艺参数存储，直接调用，操作简便。
  - 齿轮泵和螺杆、机头采用电动脱离结构，有效降低劳动强度，方便更换胶料，便于清洗。
  - 可加硫过滤，温升高，不会产生胶烧情况。
  - 设备故障报警及图标显示故障位置。
  - 机头探照灯，方便清理，避免死角清理不到位的情况出现。
  - 系统压力、挤出压力采用数字化显示在触摸屏上。
  - 新品试制时，PLC运算提供参考数据，进一步简化操作流程。
- Double-drive structured gear pump.
  - Computerized parameters, ready for repetitive use under PLC control.
  - Electronic control over the opening and closing among machine head, gear pump and the screw, saving labour upon cleaning.
  - It applies to sulfur straining, little temperature increase, which prevents scorching.
  - Machine error alarm and icons on the touch screen identify what fails to work.
  - With machine head searchlight, every corner is visible and reachable for thorough cleaning.
  - The pressures of system and extrusion are displayed on the touch screen.
  - References from PLC calculations for new blanks production.

## Double-Shaft Warm Feed Screwing Strainer Key Parameters

### 双挽热喂料螺杆预成型机技术参数 ▶

项目名称/Items	单位/Unit	DRL150W	DRL200W	DRL250W
螺杆直径/Screw Diameter	mm	150	200	250
螺杆长径比/Screw Length-Diameter Ratio	L/D	6:1	6:1	5.4:1
螺杆转速/Screw Rotary Speed	Rpm	0-40	0-40	0-40
齿轮泵转速/Gear Pump Rotary Speed	Rpm	0-40	0-40	0-40
总功率/Total Power	KW	50	70	105
最大挤出压力/Max. Extrusion Pressure	MPa	35	35	35
模温机控温/Mould Machine Temperature	°C	20-90	20-90	20-90
最大产能(过滤目数影响产能)/ Max. Capacity (Subject to unit mesh number)	kg/h	750	1200	1800
外形尺寸(L×W×H)/Exterior Dimensions	m	3.5×1.9×2.2	3.8×1.9×2.2	4.0×1.9×2.2
机器重量/Machine Weight	t	7.5	10.5	13.5
加料方式/Feeding Types	冷/热Cold/Hot	热 Hot	热 Hot	热 Hot
最高过滤目数(目数越高产能越低)/Max. Unit Mesh Number (The greater the number, the less the capacity)	目/Unit Mesh Number	300	300	300

# LSZ VIBRATION COOLING CONVEYOR

## LSZ1050 振动式冷却输送机



- 此机是专为解决胶胚粘连、变形、冷却而设计的预成型机配套辅机，该机与胶料接触部位均采用不锈钢材料。
  - 占地面积小，节省场地空间。
  - 适用于液体隔离剂、粉状隔离剂或直接风冷。
  - 适用于FKM、NBR、CR、EPDM等各种胶料，以及造粒、轴承密封件、油封、O型圈、长条、片状的各种坯料。
  - 合理的设计，内部走线方式，航空插头连接设备各部分，轻松拆卸安装。
- This is an auxiliary machine of the precision performer to avoid stickiness and deformation of the rubber blanks, the part of the machine which directly contact rubber blanks is made of stainless steel.
  - Small floor space, saving space.
  - Suitable for liquid release agent, powder release agent or direct air-cooling.
  - Applicable to FKM, NBR, CR, EPDM and other rubber compounds, and granulation, bearing seals, oil seals, O-rings, long strips, flakes of various kinds of blank.
  - Reasonable design, line hidden inside, connect all the parts of the equipment with an aviation plug, easy to disassembly and installation.

### LSZ 1050 Vibrating Type Cooling Conveyor Technical Parameter

#### LSZ1050 振动式冷却输送机技术参数

项目名称 / Items	单位 / Unit	LSZ1050	LSZ1200
振动槽直径 Groove diameter	mm	1050	1200
振动槽宽度 Groove width	mm	240	400
振动槽高度 Groove height	mm	1600	1600
物料输送距离 Material running distance	mm	35000	50000
螺旋节距 Helical pitch	mm	110	110
进料口宽度 Width of inlet	mm	650	650
进料口高度 (离地面高度) Height of inlet (From the ground level)	mm	300	300
出料口宽度 Width of outlet	mm	245	245
出料口高度 (离地面高度) Height of outlet (From the ground level)	mm	1650	1650
输送速度 m/min (可调节) Conveying Speed m/min (adjustable)	m/min	6 ~ 8	6-8
冷却风机功率 Motor power for cooling fan	KW	3.7	3.7
电机功率 Motor power	KW	0.75 x 2	1.1*2
外形尺寸 (L×W×H) External Dimension	m	2.15×1.35×2.56	3*1.5*2.56
总重量 Total weight	t	1.2	1.5

# LSZ VIBRATION REFRIGERATION COOLING CONVEYOR

## LSZ1050-L 振动制冷式冷却输送机

### LSZ1050-L 振动制冷式冷却输送机



- 此机是专为解决胶胚粘连、变形、冷却而设计的预成型机配套辅机，该机与胶料接触部位均采用不锈钢材料。
  - 机器整体封闭，外接冷风机，强制胶胚冷却，冷风循环，可有效防尘，保证清洁度。
  - 占地面积小，节省场地空间。
  - 适用于FKM、NBR、CR、EPDM等各种胶料，以及造粒、轴承密封件、油封、O型圈、长条、片状的各种坯料。
  - 合理的设计，内部走线方式，航空插头连接设备各部分，轻松拆卸安装。
- This is an auxiliary machine of the precision performer to avoid stickiness and deformation of the rubber blanks, the part of the machine which directly contact rubber blanks is made of stainless steel.
  - Whole machine is closed wholly, there is an external air chiller fan, forcing to cool down rubber blanks, cold air circulation, it can proof the dust effectively to ensure cleanliness.
  - Small floor space, saving space.
  - Applicable to FKM, NBR, CR, EPDM and other rubber compounds, and granulation, bearing seals, oil seals, O-rings, long strips, flakes of various kinds of blank.
  - Reasonable design, line hidden inside, connect all the parts of the equipment with an aviation plug, easy to disassembly and installation.

### LSZ1050-L Vibration Refrigeration Cooling Conveyor Technical Parameter

#### LSZ1050-L 振动制冷式冷却输送机技术参数

项目名称 / Items	单位 / Unit	LSZ1050-L	LSZ1200-L
振动槽直径 Groove diameter	mm	1050	1200
振动槽宽度 Groove width	mm	240	315
振动槽高度 Groove height	mm	1600	1600
物料输送距离 Material running distance	mm	35000	50000
螺旋节距 Helical pitch	mm	110	110
进料口宽度 Width of inlet	mm	650	650
进料口高度 Height of inlet	mm	300	300
出料口宽度 Width of outlet	mm	245	245
出料口高度 Height of outlet	mm	1650	650
输送速度 m/min (可调节) Conveying Speed m/min (adjustable)	m/min	6 ~ 8	6-8
电机功率 Motor power	m/min	0.75*2	1.1*2
冷却风机功率 Motor power for cooling fan	KW	3.7	3.7
制冷式进风温度 Wind inlet temp. of refrigeration	°C	<8	<8
制冷机功率 Power of refrigeration	KW	5 ~ 7	5-7
外形尺寸 (L×W×H) External Dimension	m	2.15×1.35×2.56 (主机)	3*1.5*2.56 (主机)
总重量 Total weight	t	1.7	2.0

# LSS650 WATER COOLING CONVEYER

LSS650 水冷式冷却输送机



## LSS650 WATER COOLING CONVEYER

### LSS650 水冷式冷却输送机

- 此机是专为解决胶胚粘连、变形而设计的预成型机配套辅机，通过冷却水或冷却溶液使胶胚降温，再经过强制风冷，使胶胚干燥、稳定。
  - 该机与胶料接触部位均采用不锈钢材料。
  - 平面输送速度可调。
  - 适用于水冷或使用液体隔离剂的产品，以及较大尺寸的产品。
  - 水槽部分使用杠杆原理，方便对水箱提升分离，以便实现更换胶料时对水箱的快速清理。
  - 选配：冷水机。
- This is an auxiliary machine of the precision performer to avoid stickiness and deformation of the rubber blanks. After cooling down with cooling water or cooling solution, and then with forcible cooling wind, the rubber blanks will become dry and stable.
  - The part of the machine which directly contact rubber blanks is made of stainless steel.
  - Running speed can be adjusted.
  - Suitable for water cooling or the use of liquid release agent, and larger size products.
  - The sink part uses the lever principle, easy separate the tank, in order to achieve rapid cleanup of the tank when replacing compound.
  - Optional: chiller.

### LSS650 Water Cooling Conveyor Technical Parameter

#### LSS650 冷却输送机技术参数

项目名称 / Items	单位 / Unit	LSS650	LSS650P	
斜面输送不锈钢材质 Stainless Steel Sloping Conveyor	输送宽度/Conveying Width	mm	450	450
	料坯浸水距离/Watering Distance	mm	700	1700
	斜面输送速度/Ascending Speed	m/min	8.3	8.3
	冷却风量/Unit Airflow Volume	m <sup>3</sup> /h	1620	1620
平面输送与胶料接触部位 不锈钢材质 Stainless Steel Horizontal Conveyor	斜面输送速度(不可调节)/ Ascending Speed (Unadjustable)	m/min	2.5	2.5
	输送宽度/Conveying Width	mm	380	380
	水平输送速度(可调节)/ Conveying Speed (Adjustment)	m/min	1.6~3.2	1.6~3.2
整机部份 The Whole Machine	层数/Floors		3	3
	水箱尺寸 (LxWxH)/Watering Area Dimensions	m	1.46×0.8×0.27	2.46×0.8×0.27
	冷却风量/Unit Airflow Volume	m <sup>3</sup> /h	10320	10320
	外形尺寸(LxWxH)/Exterior Dimensions	m	5.35×0.75×1.84	6.35×0.8×1.84
	总功率/Total Power	KW	1.8	2.3
重量/Weight	T	1.2	1.8	



# LSS-Q800 CLEAN-UP & AUTO-WEIGHING WATER COOLING CONVEYER

## LSS-Q800 清理 & 自动称量水冷式冷却输送机



# LSS-Q800 CLEAN-UP & AUTO-WEIGHING WATER COOLING CONVEYER

## LSS-Q800 清理 & 自动称量水冷式冷却输送机

LSS-Q800 清理 & 自动称量水冷式冷却输送机是精密预成型机配套使用的胶料后段冷却、输送、吹干及称重分箱装置。

精密预成型机切下的胶料经过 LSS-Q800 冷却输送机浸水，输送，吹干后由横向皮带输送机送入物料箱。当物料箱内胶料达到设定的重量后，横向皮带输送机停止运行，自动推箱器将满箱的物料自动换成空箱，横向皮带输送机再次运行，达到自动称重，自动分箱，自动换箱功能。

同时，满箱的物料箱被自动输送到滚筒输送线上，由操作人员处理。浸水输送装置可使胶料冷却并防止胶料碎屑相互污染。水箱内有余料箱，方便取出清理。当冷却输送机上无胶料时，空运行 5 分钟后，即自动停机。

LSS-Q800 clean-up & auto-weighing water cooling conveyor is a downstream machine of precision preformer which is to cool, convey, dry, weigh and sort rubber compounds into charging-basket.

Rubber compounds cut by precision preformer can be sorted into charging-baskets after dipped into water, conveyed, dried then delivered by cross belt conveyor. When the rubber compounds reach the set weight, the cross belt conveyor will stop running, the basket-pushed device will change this full charging-basket with an empty one automatically, and cross belt conveyor will run again to fulfill the functions of auto-weighing, automatic basket-sorting and automatic basket-changing.

Meanwhile, full charging basket will be delivered to roller conveying line, and then operating personnel can deal with it. Water-dipping device facilitates to cool down the rubber compound and to avoid polluted by kinds of rubber chippings mutually. There is a charging-basket for remaining compounds which is easy to take out and clean up. When there is no rubber compound on the cooling conveyor, it will stop after 5 minutes' automatic dry run.

### LSS-Q800 Clean-up & Auto-weighing Water Cooling Conveyor Technical Parameters:

#### LSS-Q800 清理 & 自动称量水冷式冷却输送机技术参数

浸水输送带速度：4 ~ 8 米 / 分钟 (无级调速) 输送长度：1.5 米  
斜面输送带速度：3 ~ 6 米 / 分钟 (无级调速) 输送长度：3.0 米  
水平输送带速度：1.5 ~ 3 米 / 分钟 (无级调速) 输送长度：4.0 米  
采用  $\delta=1.5\text{mm}$  不锈钢网带输送，带宽：300 毫米  
料箱内胶料称重范围：10 ~ 20 千克 / 箱 (可设定) 超出范围可定制  
整机联成后最大外形尺寸 (长 \* 宽 \* 高)：9\*2.4\*2.1 米  
重量：1.0 吨  
选用配套料箱尺寸：料箱底部长 \* 宽：(500 ~ 600)\*(400 ~ 460) 毫米  
料箱高度：150 ~ 170 毫米  
可根据料箱外形尺寸定制称重换箱装置。

Water-dipping conveying net belt speed: 4-8m/min (infinite speed regulation) Conveying length: 1.5m  
Slope conveying net belt speed: 3-6m/min (infinite speed regulation) Conveying length: 3.0m  
Horizontal conveying net belt speed: 1.5-3m/min (infinite speed regulation) Conveying length: 4.0m  
 $\delta=1.5\text{mm}$  stainless steel net belt, belt width: 300mm  
Weight range for rubber compounds in charging-basket: 10-20kgs/basket (adjustable) customized accordingly if outside this range  
Whole unit Max. Overall dimension (L\*W\*H) 9\*2.4\*2.1m  
Weight: 1.0 T  
Charging-basket dimension (affiliated):  
Charging-basket base: L\*W (500-600)\*(400-460)mm  
Charging-basket Height: 150-170mm

#### 主要配置

程序控制采用三菱 (MISUBISHI) PLC, 光电传感器采用欧姆龙 (OMRON), 断路器采用法国施耐德 (Schneider), 交流接触器采用德国西门子 (SIEMENS), 变频器采用三菱 (MISUBISHI)。

#### Mainframe Configuration:

Program control system adopts MISUBISHI PLC, OMRON Photoelectric Sensors, Schneider breaker, SIEMENS AC Contactor, MISUBISHI Frequency Converter.

# THE 4th GENERATION OF SILICONE CONDUCTIVE TUBE PRODUCTION LINE

## 第四代硅胶导电管生产线



# THE 4th GENERATION OF SILICONE CONDUCTIVE TUBE PRODUCTION LINE

## 第四代硅胶导电管生产线

本设备专用于硅胶导电管、导电条生产。基本原理是用柱塞挤出机挤出胶料。挤出过程中，直接硫化。若两台设备同时挤出，用不同材料制成导电胶和非导电胶组成的双材料管。本设备采用定量精确控制挤出速度，可确保质量稳定。

This equipment is dedicated to the silicone conductive tube, conductive strip production. Basic principle is to use ram extruder to extrude rubber compound, and cured directly in the process of extrusion. Two equipments are extruding at the same time for conductive resin of different materials and double materials tube of non-conductive resin. This equipment adopts the ration accuracy control extrusion speed to ensure stable quality.

- 特点:**
1. 无需人员看管，挤出速度绝对稳定，保证质量稳定。
  2. 挤出速度精确显示可任意修正速度。

**Features:**

1. Without staff supervision, extrusion speed absolute stable, ensure the quality stable.
2. Extrusion speed precision display can be corrected randomly.

性能 / 机型 Performance/ Model	挤出速度调整方法 Extrusion speed Adjustment Method	挤出速度 Extrusion Speed	显示优缺点 Advantages and Disadvantages of Display	制品品质 Products quality
第一代机 1 <sup>st</sup> Generation	利用调整挤出压力来调整挤出速度 Extrusion speed adjusted by extrusion pressure	粗显示 Rough display	挤出速度不稳定随着挤出摩擦增加挤出速度减慢 Extrusion speed is unstable with the increase of extrusion friction speed slow	不稳定目前使用最多 Unstable, Most used currently
第二代机 2 <sup>nd</sup> Generation	利用调整液压系统的流量来调整挤出速度 Extrusion speed adjusted by hydraulic system flow	粗显示 Rough display	挤出速度相对稳定但要精确修正速度较困难 Extrusion speed is relatively stable but accurate correction speed is more difficult	不够稳定 Lack of stability, Most used currently
第三代机 3 <sup>rd</sup> Generation	利用调整液压系统的流量来调整挤出速度 Extrusion speed adjusted by hydraulic system flow	精确显示 Precise display	挤出速度稳定如速度误差是可报警。并且精确调整 Extrusion speed stability, such as error is to call the police. And precise adjustment	制品品质优但需人工调整 Quailed, but need manual adjustment
第四代机 4 <sup>th</sup> Generation	利用调整液压系统的流量来调整挤出速度 Extrusion speed adjusted by hydraulic system flow	精确显示并自动修正挤出速度 Precise display and Automatic correction on extrusion speed	挤出速度稳定不需要人工调整速度 Extrusion speed stability no need to adjust manually	制品无不良品 No defects

### Technical Parameter

#### 机技术参数

项目名称 / Item	单位 / Unit	JYZ80	JYZ100
料筒内径 Barrel inner diamete	mm	80	100
主机功率 Main power	Kw	2	2
硫化装置功率 Curing unit power	Kw	1.6	1.6
挤出最大压力 Max. extrusion pressure	Mpa	35	35
硫化温度 Curing temperature	°C	350	350
挤出精度 Extrusion precision	%	±1.0	±1.0
一次装胶量 Single feed volume	L	2	5.5
外形尺寸 (长宽高) External dimension (LxWxH)	m	1.75×0.76×1.7	2.9×1.2×1.7
重量 Weight	t	1.2	2.2
冷却水流量 Cooling water flow	L/min	10	10

# VALUE-ADDED SERVICES

## 增值服务

德仁为用户提供专业、快速的售前、售中、售后服务，服务细节如下：

### 售前服务

1. 提供各种橡胶辅助设备的信息，及必要的考察便利和技术咨询服务。
2. 在设备出厂前、生产期间，客户可派相关人员到公司配合监督生产、接受技术培训、进行产品验收等工作。
3. 负责对产品提供相应的技术培训，培训的时间、地点、人数等具体事宜由双方商定。
4. 通过为客户提供投资预算，厂房规划等多种形式的售前服务，使客户的规划既合理、规范、又能节约成本。
5. 投资预算：提供产品盈利分析、橡胶机械选型及其辅助设备配套与预算，人力资源配置预算服务。
6. 厂房规划：提供设备地基安装尺寸、设备摆放布局、车间通风、排气、运水、布线、等服务

Deren to provide you with professional, fast pre-sale, sale and after-sale service.

Service details are as follows:

### PRE-SALE SERVICE

1. provide all kinds of rubber auxiliary equipment information, convenient and necessary inspection and technical advisory services.
2. before the equipment leave the factory, the production period, the client may send relevant personnel to the company to monitor the production, technical training, product acceptance, etc.
3. is responsible for the product to provide the corresponding technical training, training time, place, number and so on concrete matters agreed upon by both parties.
4. by providing customers with the budget of the investment, plant planning, and other forms of pre-sale service, make customer plan is reasonable, standard, and can save cost.
5. the budget of the investment: the product profitability analysis, rubber type pause and its auxiliary equipment and budget, budget service human resource configuration.
6. the workshop planning: provide equipment foundation installation size, put the layout, workshop ventilation, exhaust gas, water, wiring, and other services.



### 售后服务

#### 1. 免费技术培训

现场培训客户方技术人员、设备操作和维护人员。可在培训前根据需要提供培训计划和资料，使培训后的人员能掌握与设备相关的技能需求，为设备安全使用与保养提供必要技能保障。

#### 2. 提供终身技术支持

公司产品均提供终身技术支持。在产品运行期间（包括已过质量保证期的产品）出现组件、配件损坏，公司可派专业技术人员进行维修、更换。

#### 3. 质保期内免费保修

在质保期内由于设备的因素造成的损坏，均由公司负责免费维修、保养、更换。由于人为（非我方人员）和自然灾害造成的损坏，公司负责提供免人工费用维修服务。

#### 4. 回访

配合客户对设备进行技术性巡检、回访，为客户排忧解难。

#### 5. 快速响应

保证信息反馈沟通及时，强大的服务网络，为你及进周地服务，及时回答客户询问，有需要时可在不偏离客户需求的时间内派专业人员抵达现场，对设备予以修复或配件更换。

### THE AFTER-SALES SERVICE

#### 1. Free technical training

On-site training, technical personnel, equipment operation and maintenance personnel. But before the training according to the need for training program and data, and make the training of personnel to master the skills related to the equipment needs, provide necessary skills to ensure safe use and maintenance equipment.

#### 2. Offer lifetime technical support:

The company's products provide technical support for life. During the product operation (including product has passed the quality guarantee period) components, parts damage, company can send professional and technical personnel for repair and replacement.

#### 3. The warranty period free warranty:

In the warranty period due to the factors of equipment damage, by the company responsible for free repair, maintenance, replacement. Because of human (not our personnel) and damage caused by natural disasters, the company responsible for providing maintenance service free of artificial cost, charge material cost accordingly.

#### 4. Pay a return visit

Cooperate with customer for technical equipment inspection, review, can save a lot of problems for customers.

#### 5. Fast response

Ensure information feedback timely communication, strong service network, and into the week to service for you, in time to answer customer inquiries, when necessary, can in not deviating from the customer needs to send professional personnel arrived at the scene, to repair or parts replacement equipment.